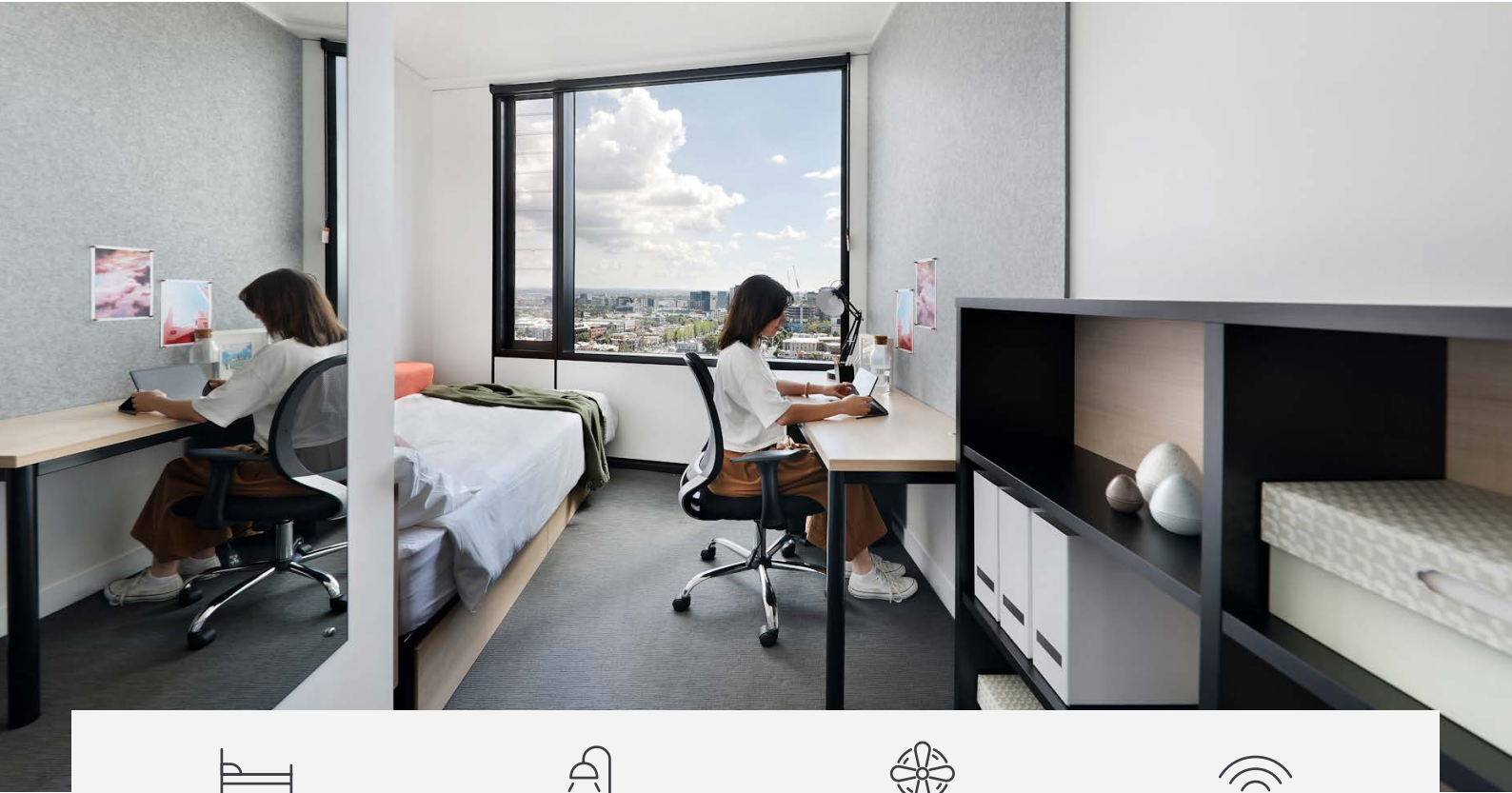




# IGLU MELBOURNE CITY

## SHARE APARTMENTS



5-6 bedrooms



Private bathroom



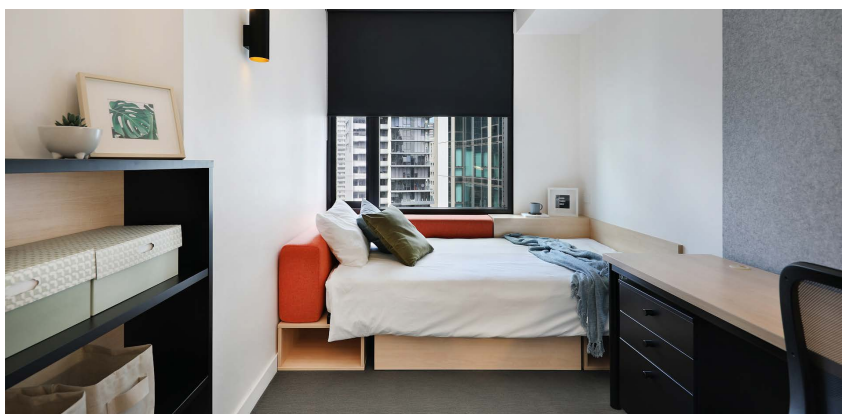
Air conditioning



Unlimited wi-fi

Live in the heart of Melbourne  
in our cool shared student  
apartment. It's a great way to  
make new friends.

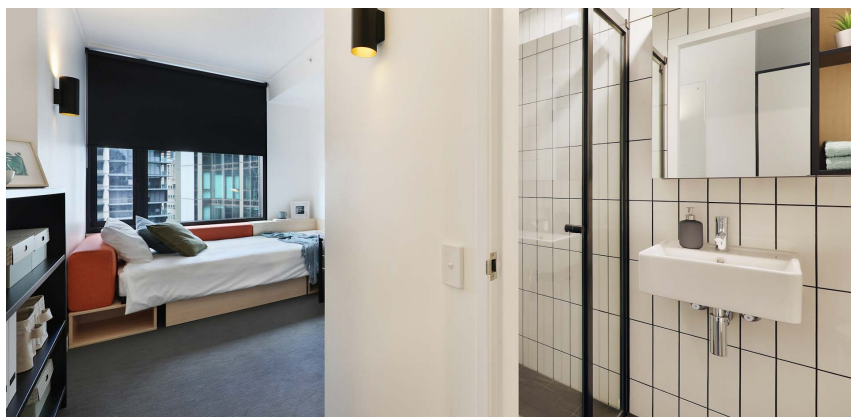
Sound cool?



- › Each bedroom has an ensuite bathroom and air-conditioning
- › Apartments feature a large kitchen, lounge and dining area
- › Unlimited high-speed wi-fi is included and available throughout

## INSIDE THE APARTMENT

All images are illustrative only and indicative of Iglu's finishes and features.



## FEATURES AND INCLUSIONS

Choose a 5 or 6 bedroom share apartment at Iglu Melbourne City:

### SHARED SPACE

- › HD television
- › Air-conditioning / heating
- › Lounge area with couch, coffee table and ottomans
- › Dining table and chairs
- › Fully equipped kitchen with:
  - oven, microwave, cooktop
  - refrigerator and freezer
  - kettle and toaster

### PRIVATE BEDROOM

- › Secure swipe card
- › Air-conditioning / heating
- › King single bed with built-in storage
- › Private ensuite bathroom
- › Study desk, chair, lamp and pinboard
- › Bookshelf and storage
- › Built-in wardrobe and full length mirror
- › Windows with block-out blinds

### ENSUITE BATHROOM

- › Shower
- › Toilet
- › Basin
- › Mirror
- › Towel rail
- › Exhaust fan
- › Storage cabinet and shelving

 Accessible apartments available



### ONE HANDY ALL-INCLUSIVE FEE

Your weekly rent includes all of this plus your water, electricity, access to 24/7 onsite support and lots of cool events.

# IGLU MELBOURNE CITY

## SHARE APARTMENTS

### MATTRESS SIZE

- › King single bed: 106 x 203 cm

### SHARE KITCHEN & DINING AREA

- › Approx. 23m<sup>2</sup>

### BEDROOM LAYOUT 01

- › Approx. 13.5m<sup>2</sup>

### BEDROOM LAYOUT 02

- › Approx. 13.5m<sup>2</sup>



Room allocations are based on availability.

All floorplans are illustrative only and indicative of Iglu's finishes and features.

### Key

- ❄ Refrigerator unit
- ⊗ Shelving / storage
- Window / glass