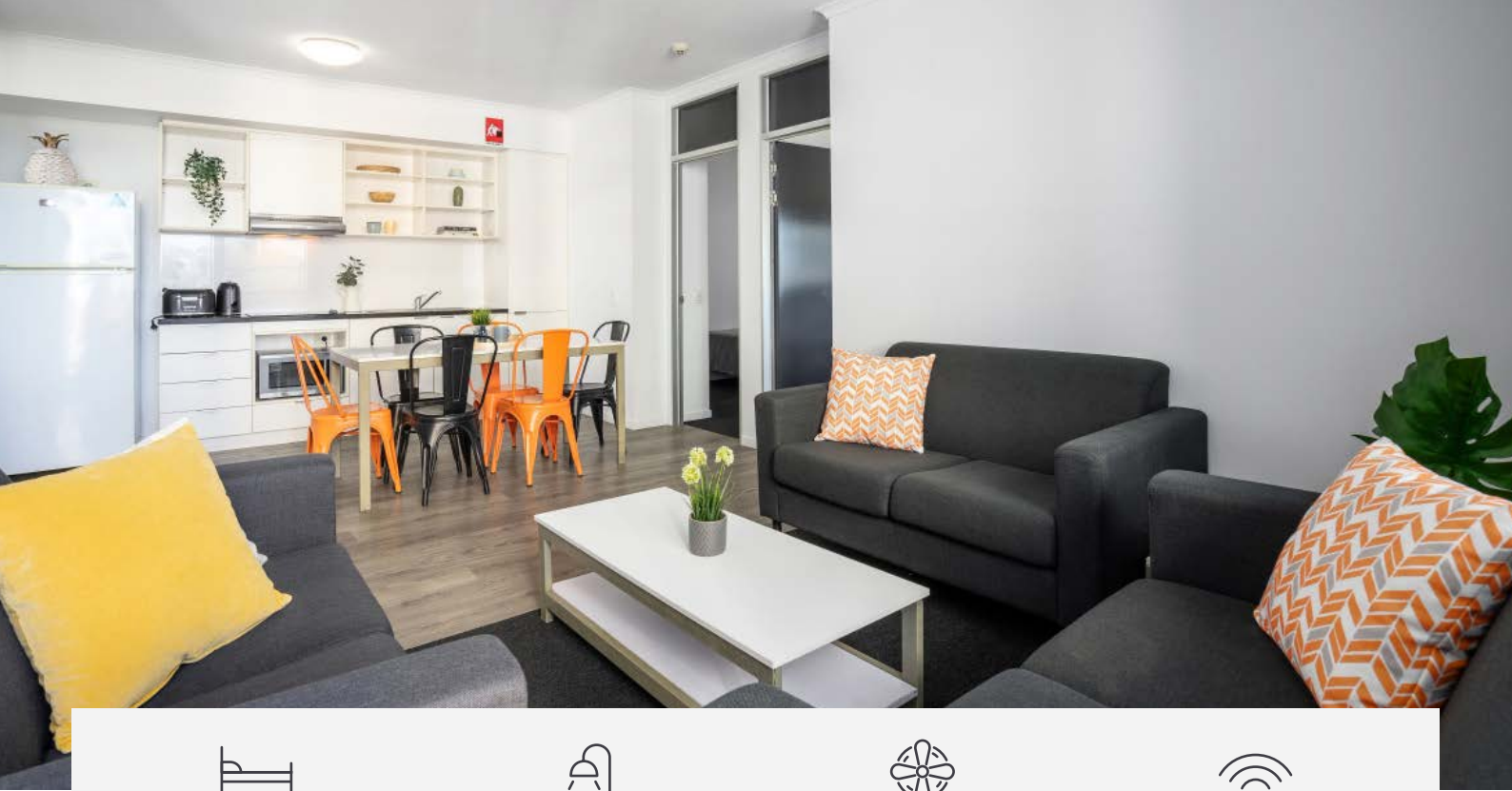




IGLU KELVIN GROVE

5-6 BEDROOM SHARE APARTMENT



5-6 bedrooms*



Shared bathroom



Ceiling fans

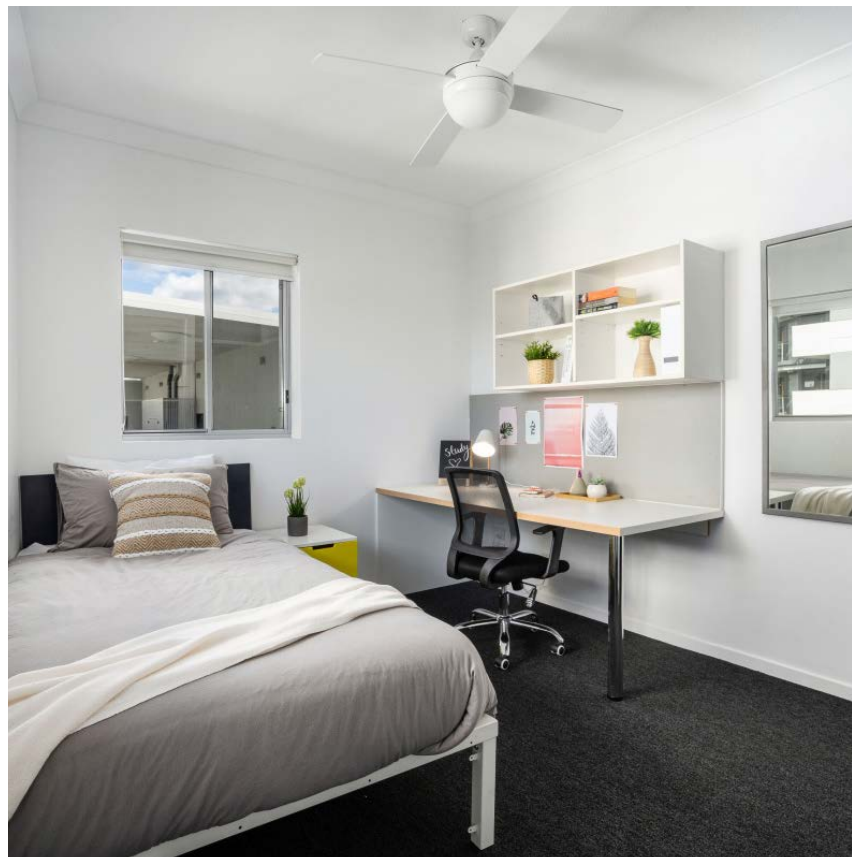


Unlimited wi-fi

Living in a shared student apartment is a great way to meet people and make new friends. And it's fully furnished!

Pretty cool really.

- › Enjoy access to either a balcony or porch area
- › Features a large shared kitchen, lounge and dining area
- › Unlimited high-speed wi-fi is included and available throughout



INSIDE THE APARTMENT

All images are illustrative only and indicative of Iglu's finishes and features.



FEATURES AND INCLUSIONS

SHARED SPACE

- › Secure swipe card
- › Lounge area with couch and coffee table
- › Entertainment unit (TV not included)
- › Dining table and chairs
- › Full kitchen with:
 - convection microwave
 - refrigerator and freezer
 - ceramic cooktop
- › Balcony or porch area

PRIVATE BEDROOM

- › Lockable door
- › King single bed
- › Ceiling fan
- › Private bathroom
- › Study desk, chair and pinboard
- › Bookshelf
- › Storage
- › Wardrobe and mirror

SHARED BATHROOMS

- › Shower
- › Toilet
- › Basin
- › Mirror
- › Shelving
- › Towel rail
- › Exhaust fan

♿ Accessible apartments available

*There are a small number of 6 bedroom apartments with larger living spaces which may be assigned as an alternative.



ONE HANDY ALL-INCLUSIVE FEE

Your weekly rent includes all of this plus your water, electricity, access to 24/7 onsite support and lots of cool events.

IGLU KELVIN GROVE

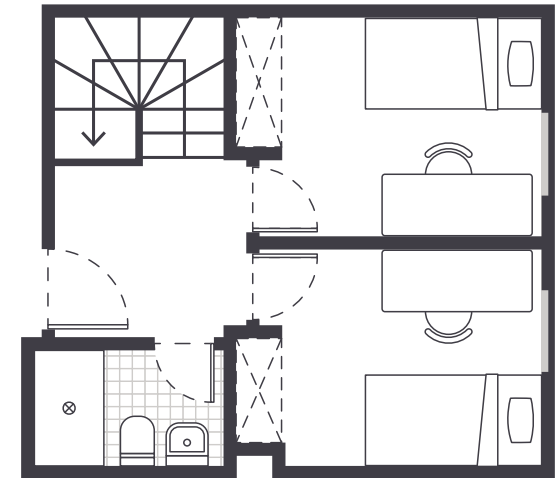
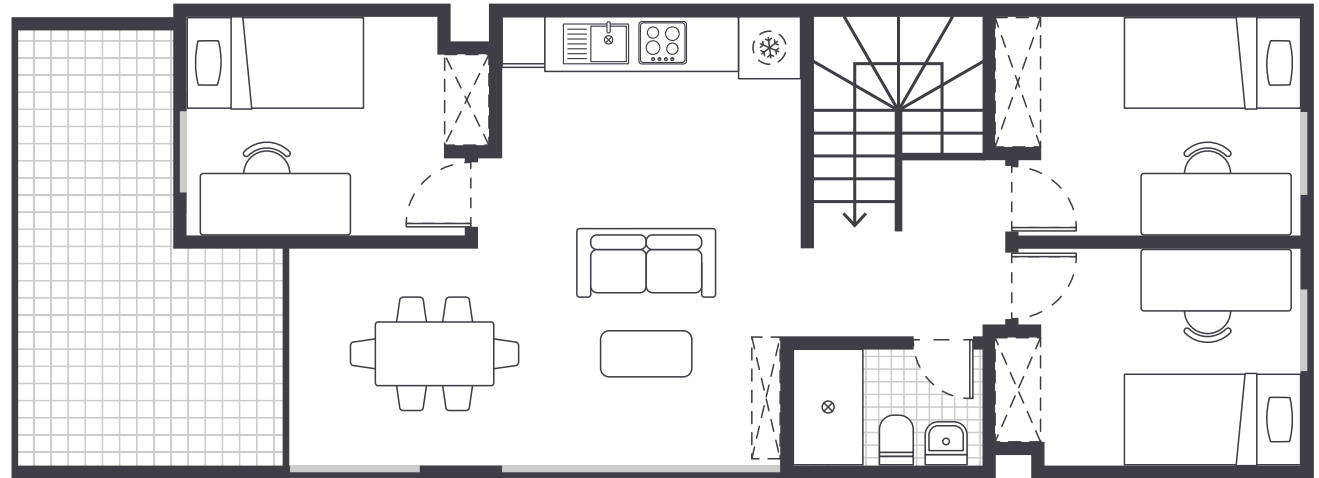
5 BEDROOM SHARE APARTMENT

MATTRESS SIZE

- › King single bed: 106 x 203 cm

APARTMENT LAYOUT

- › Two floors
- › Two share bathrooms
- › Bedrooms are approx. 10.5m²



Room allocations are based on availability.

All floorplans are illustrative only and indicative of Iglu's finishes and features.

Key



Refrigerator unit



Shelving / storage



Window / glass

IGLU KELVIN GROVE

6 BEDROOM SHARE APARTMENT

MATTRESS SIZE

- › King single bed: 106 x 203 cm

APARTMENT LAYOUT

- › Two floors
- › Two share bathrooms
- › Bedrooms are approx. 10.5m²



Room allocations are based on availability.

All floorplans are illustrative only and indicative of Iglu's finishes and features.

Key

- ❄ Refrigerator unit
- ⊠ Shelving / storage
- Window / glass