



# IGLU MELBOURNE CITY

## STUDIO APARTMENTS



Sleeps 1-2\*



Private bathroom



Air conditioning



Unlimited wi-fi

Live in the heart of Melbourne  
in a cool studio apartment,  
with private living and study  
space, and friends next door.

Sound cool?



- › Each studio has a private ensuite bathroom and centralised air-conditioning
- › Features well-appointed kitchenette with eating area for self-catering
- › Unlimited high-speed wi-fi is included and available throughout

## INSIDE THE STUDIO

All images are illustrative only and indicative of Iglu's finishes and features.



STANDARD STUDIO APARTMENTS



PREMIUM STUDIO APARTMENTS



## FEATURES AND INCLUSIONS

### PRIVATE STUDIO APARTMENT

- › Secure swipe card
- › Double bed with under bed storage
- › Ensuite bathroom
- › Centralised air-conditioning / heating
- › HD television
- › Study desk, lamp, table and chairs
- › Pinboard and bookshelf
- › Built-in wardrobe and full length mirror
- › Kitchenette with microwave, cooktop, refrigerator, kettle and toaster
- › Louvre window with block-out blinds

### ENSUITE BATHROOM

- › Shower
- › Toilet
- › Basin
- › Mirror
- › Towel rail
- › Exhaust fan
- › Storage cabinet and shelving

 Accessible apartments available



### ONE HANDY ALL-INCLUSIVE FEE

Your weekly rent includes all of this plus your water, electricity, access to 24/7 onsite support and lots of cool events.

# IGLU MELBOURNE CITY

## STANDARD STUDIO APARTMENTS

### MATTRESS SIZE

- › Double bed: 137 x 187 cm

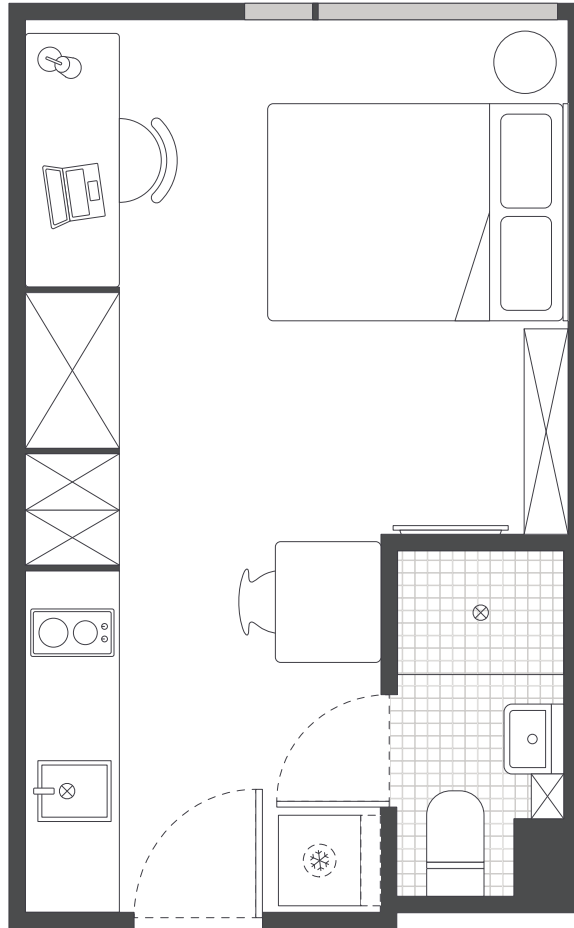
### STUDIO LAYOUT 01

- › Approx. 21m<sup>2</sup>

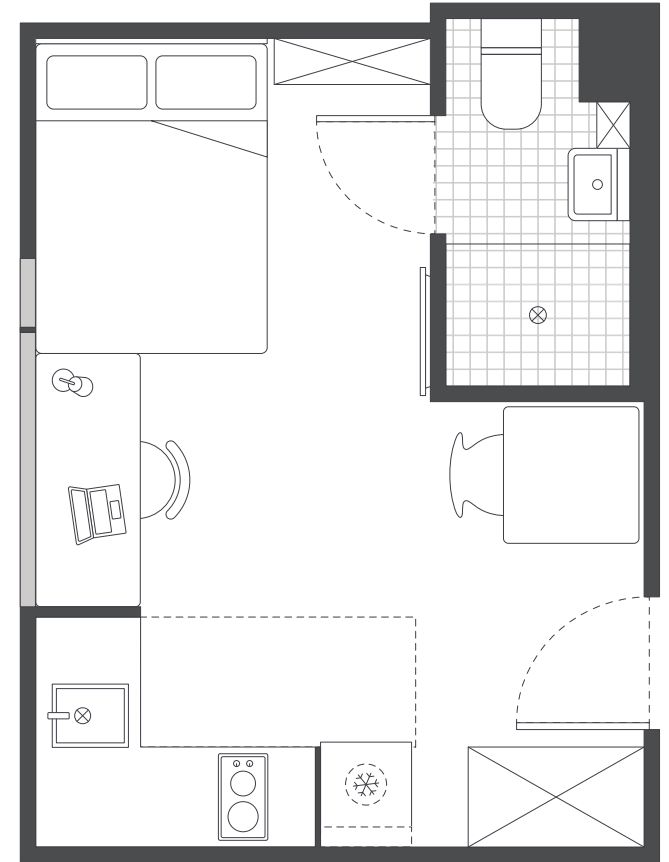
### STUDIO LAYOUT 02

- › Approx. 21m<sup>2</sup>

1



2



Room allocations are based on availability.

All floorplans are illustrative only and indicative of Iglu's finishes and features.

### Key

- ❄ Refrigerator unit
- ⊠ Shelving / storage
- Window / glass

## IGLU MELBOURNE CITY

### PREMIUM STUDIO APARTMENTS

#### MATTRESS SIZE

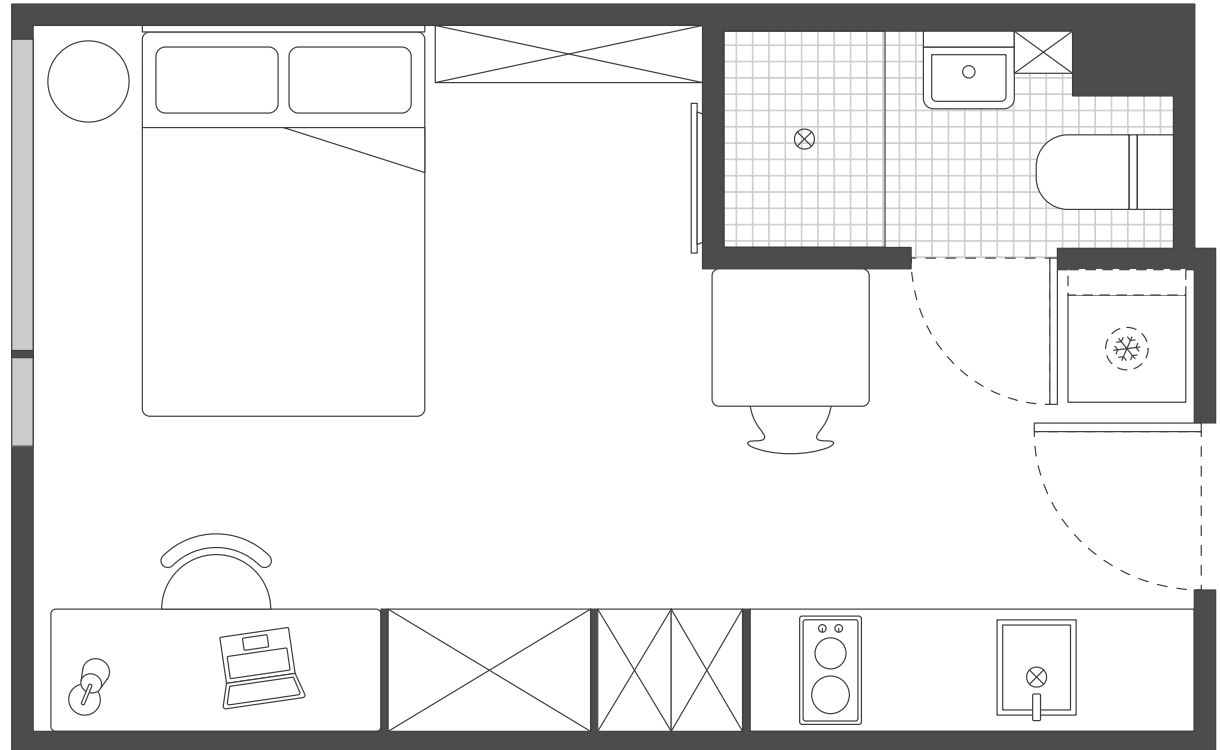
- › Double bed: 137 x 187 cm

#### STUDIO LAYOUT

- › **North Tower:** on levels 1 to 9, north facing
- › **South Tower:** on levels 11 upwards
- › Approx. 21m<sup>2</sup>



Premium Studios offer district views over the Queen Victoria Market.



Room allocations are based on availability.

All floorplans are illustrative only and indicative of Iglu's finishes and features.

#### Key



Refrigerator unit



Shelving / storage



Window / glass