



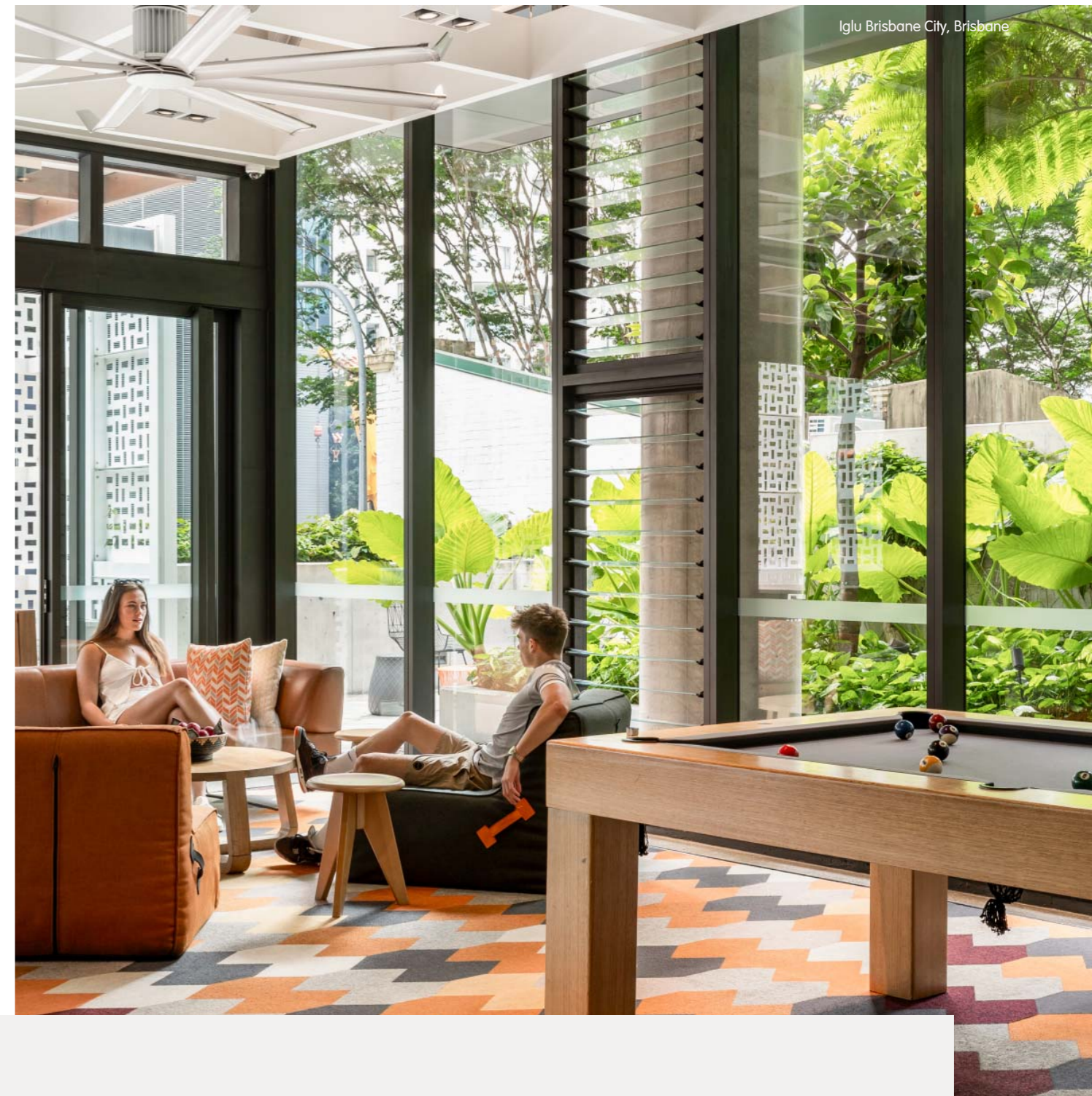
DISCOVER IGLU
COOL STUDENT LIVING

I love the social side of Iglu and how easy it is to meet people. I also like the simplicity of it. Just moving out of home, I only have to worry about rent, not water or Wi-Fi. It's a great first step out of living with your parents. You're never lonely in the sense of there is always someone to talk to and you're always meeting new people.

Jazz, Iglu Mascot



Iglu Summer Hill, Sydney



Iglu Brisbane City, Brisbane

Cool design, warm hospitality

Purpose-built for cool student living, Iglu combines the supportive benefits of campus accommodation with the independence of an off-campus lifestyle.

Cool living spaces and awesome facilities present endless opportunities to connect socially and expand academically – all within a safe and secure environment. Perfectly positioned properties provide easy access to major universities and colleges, all the must-have amenities, and public transport. What more could you want?

Discover Iglu today and live your best student life.

Iglu is built for students

At Iglu, we don't just build buildings, we build communities. We are a home away from home for our residents during one of the most formative stages of their lives.

Student living is about more than lectures and tutorials, and education doesn't just happen inside a classroom. We appreciate that a balanced approach is key to succeeding in all aspects of life.

When you move into Iglu, you get more than just a place to live. As well as providing regular events and activities across the year, our Iglu team will ensure you enjoy the full student living experience. We understand the need for space to come together as well as to be apart. We want to help create connections and provide continued support – whenever that is required.

Our residents thrive on exposure to different cultures, beliefs and backgrounds and our community program is designed to be harmonious and inclusive for all.



Iglu is all about...



LOCATION

Getting to campus on time, going shopping, catching a movie, meeting friends for coffee, or heading out to explore the city, should all be easy. Our locations facilitate and maximise your student experience and get you right to where you need to be.



SUPPORT

We want you to always feel safe and secure. Each Iglu property has CCTV and secure swipe card access to the building, lifts and apartments. Add 24/7 onsite support and you can rest assured that your personal safety is paramount while you live at Iglu.



COMMUNITY

You have a built-in community right outside your door. When it's time to close the books, our events are a chance to come together and meet your neighbours. There's always something to do and always someone to hang out with.



FLEXIBILITY

Take advantage of generous social and study spaces. Choose a private bedroom in a share apartment or your own studio or one-bedroom apartment. Use the cool amenities to cook with friends, or head out for a bite. The choice is yours.

Everything you need is here



Iglu Waterloo, Sydney

COOL INCLUSIONS

With all these perks included under one roof, it's easy to manage your budget when you live at Iglu



Unlimited wi-fi



Utilities



24/7 support



Resident facilities



Regular events ¹



Weekday breakfast ²

SHARE WITH OTHERS

If you're keen for flatmates, choose a private bedroom in a share apartment.

INCLUSIONS*

BEDROOM

- › King single or double bed
- › Private or shared bathroom
- › Air-conditioning (or ceiling fans)
- › Desk, chair, lamp and storage
- › Pinboard and shelves
- › Wardrobe and mirror

APARTMENT

- › Television
- › Air-conditioning (or ceiling fans)
- › Sofa, dining table and chairs
- › Kitchen with microwave and/or oven, refrigerator and small appliances (e.g. kettle)

Shown: Share Apartment bedroom at Iglu Chatswood
* Inclusions list is indicative only. Please refer to each property page on iglu.com.au for exact inclusions.



PLENTY OF FACILITIES

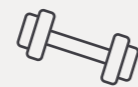
Take advantage of all the communal facilities



Study spaces



Social areas



In-house gym



Terrace & BBQs



24/7 laundry ³



Bike storage

¹ Some external events may incur a cost
² Breakfast is not part of the residential agreement and is included as an added extra
³ Additional costs apply

YOUR OWN STUDIO

If you prefer your own space, a studio apartment* with a private bathroom could be the perfect option for you.

INCLUSIONS*

- › Television
- › King single, double or queen bed
- › Table and chair(s)
- › Private bathroom
- › Air-conditioning (or ceiling fans)
- › Study desk, chair and lamp
- › Pinboard and shelves
- › Wardrobe and mirror
- › Kitchenette with microwave and/or oven, refrigerator and small appliances (e.g. kettle)

SHOWN: Superior Studio Apartment at Iglu Waterloo
* Inclusions list is indicative only. Please refer to each property page on iglu.com.au for exact inclusions.
 * Iglu Kelvin Grove has one bedroom apartments.





Location by design

Awesome buildings need awesome locations. We've got that covered.

Our properties are strategically and conveniently located, giving students easy access to major universities, all the must-have amenities, and public transport. In turn, they offer these unique benefits:

A diverse social network – living with students from other universities and colleges, as well as from different corners of the globe, expands friendships beyond your day-to-day academic and social circles.

A motivating experience – living with like-minded people who are eager to explore their new surrounds, you'll have friends motivating you to get out and experience everything your chosen city has to offer.

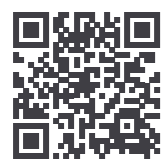
A change of scene – leaving campus each day and returning to a world with a fresh perspective, keeps life interesting and you can separate your study and living environments.

Aim high, live cool with the Iglu Regional Scholarship

If you're a student from Regional Australia or New Zealand, you could be eligible for **significant rental assistance** during your first year at Iglu.

Finding the ideal place to live while you study is just as important as selecting the right place to study. We want every student to have access to the best possible student living experience. Our Iglu Regional Scholarship is designed to support regional students starting their undergraduate degree or tertiary qualification in Sydney, Melbourne or Brisbane.

Scholarship rooms are available at all Iglu properties.



WANT TO LEARN MORE?

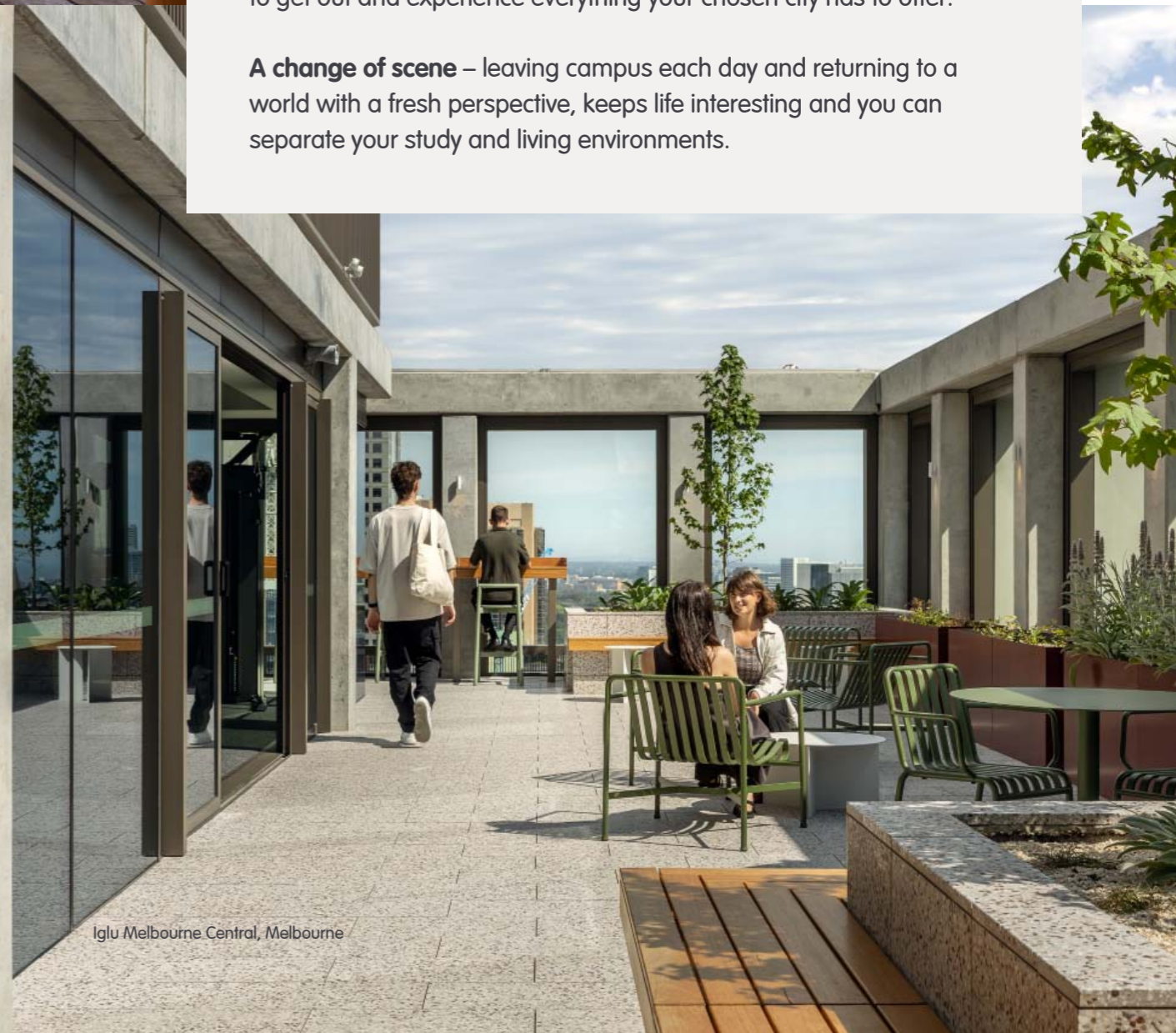
Visit the scholarships section at www.iglu.com.au/scholarships.

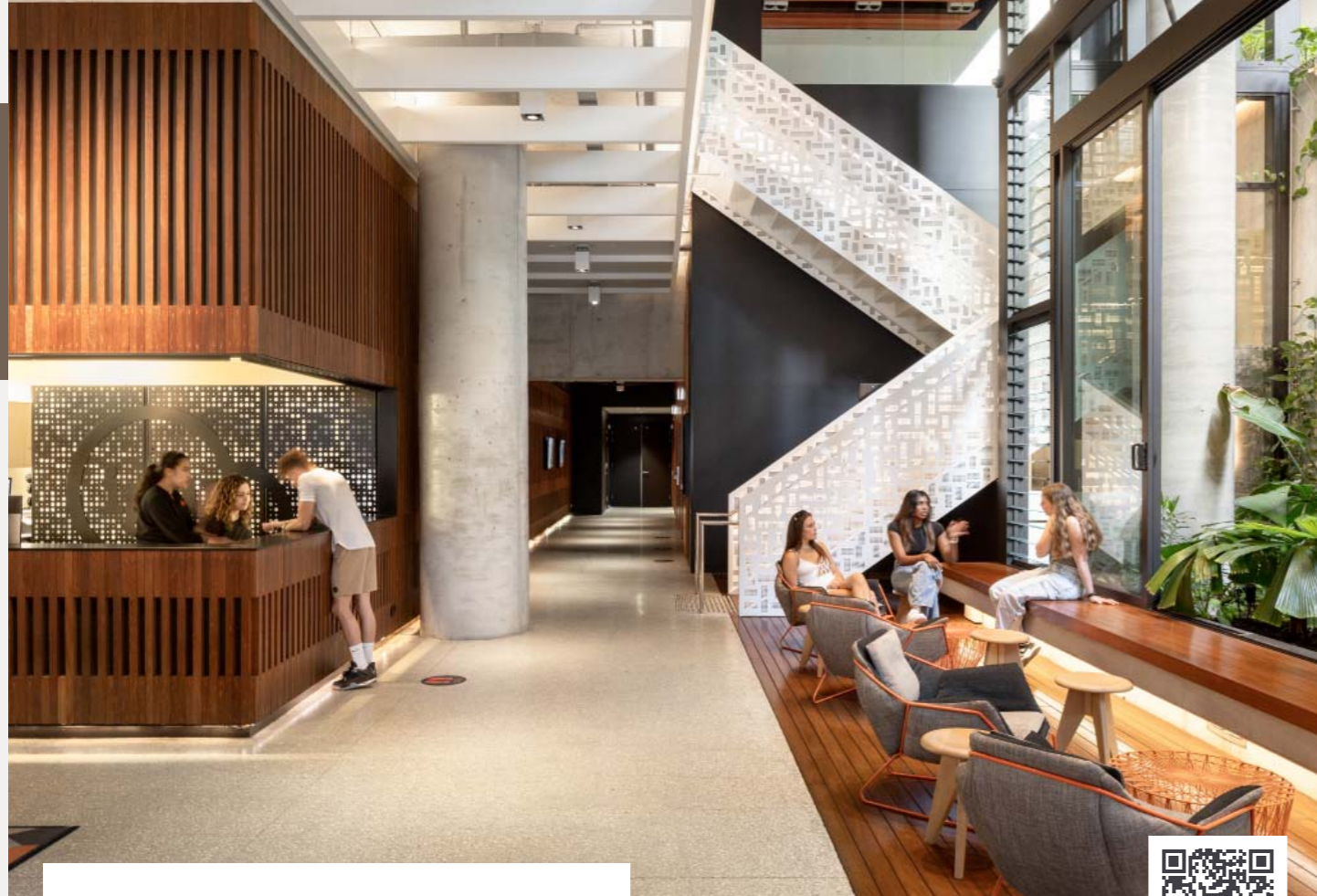
YOU DON'T NEED TO WAIT TO BOOK

With our **'No Visa, No Offer, No Pay'** option, you can tick finding a place to live off your list without needing to wait for your Visa or course offer. You can cancel your agreement without charge if you don't get accepted to your preferred university or you are unable to secure an Australian Visa. Find out more at www.iglu.com.au/cancellation.

Iglu Redfern, Sydney

Iglu Melbourne Central, Melbourne





Iglu Brisbane City

City living and cool student lifestyle

If you're seeking centrally located, student living with a unique, funky design, you'll find it at Iglu Brisbane City. Experience living in the heart of this vibrant city, just a short walk from Queensland University of Technology's city campus, with easy access to the University of Queensland and local CBD colleges. With shopping, restaurants, and nightlife right outside your door, this is convenience living at its best.



IDEAL FOR

- Queensland University of Technology (Gardens Point and Kelvin Grove) \$10/WK OFF (CODE: QUTCOOL)
- University of Queensland \$10/WK OFF (CODE: UQCOOL)
- Australian Catholic University (ACU) \$10/WK OFF (CODE: ACUCOOL)

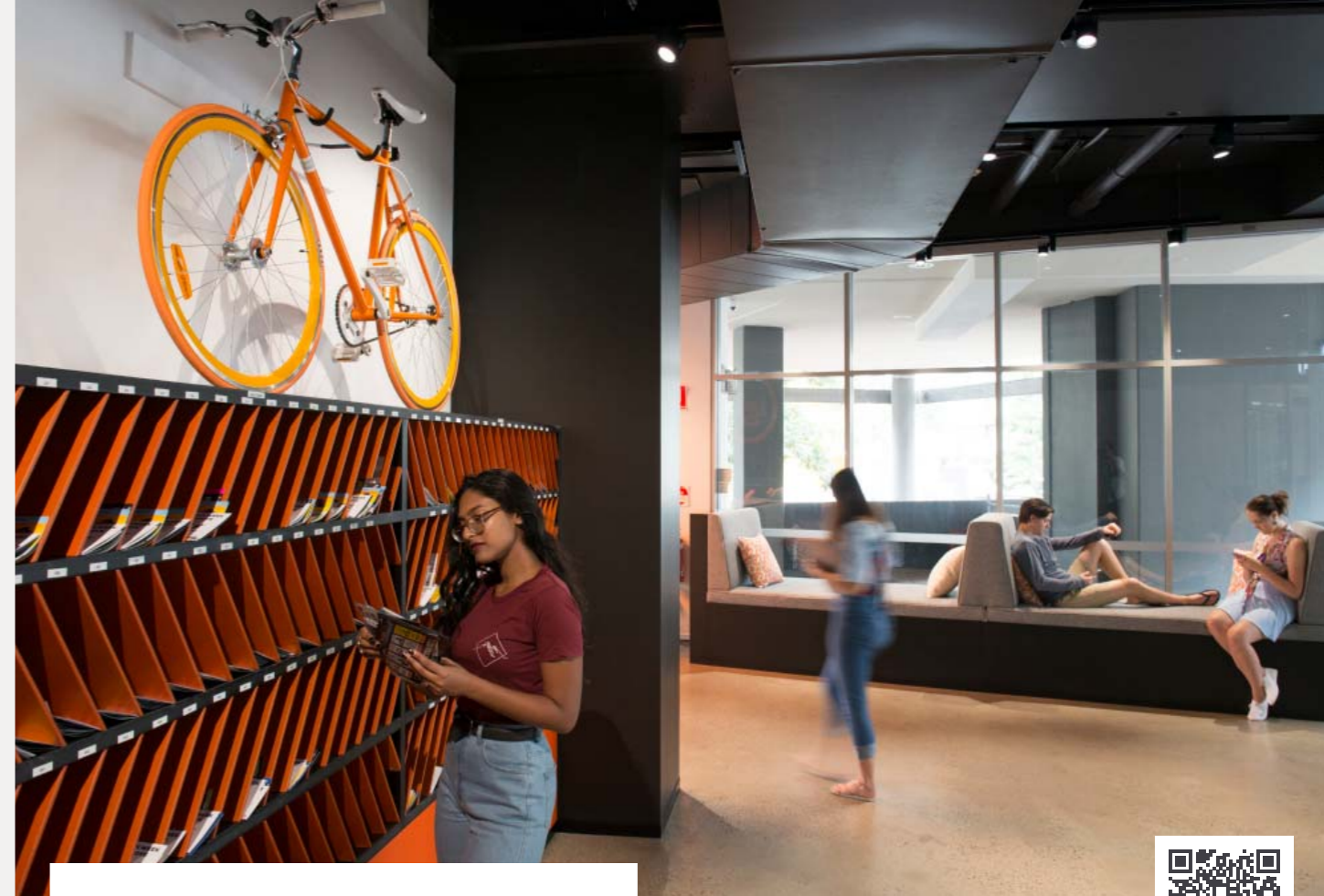


ROOM TYPES AVAILABLE

- 6 Bedroom Share Apartments (shared bathrooms)
- 5 and 6 Bedroom Share Apartments (private bathroom)
- Studio Apartments (all with private bathroom)
- Accessible apartments available

📍 65 Mary Street, Brisbane QLD 4000

☎ +61 7 3085 3434 or brisbanecity@iglu.com.au



Iglu Kelvin Grove

Campus benefits close to the city

Situated in the vibrant Kelvin Grove Urban Village, just 3km from the Brisbane CBD, Iglu Kelvin Grove is ideal for students at Queensland University of Technology's (QUT) Kelvin Grove campus. Roll out of bed and be in your lecture within minutes, while enjoying a student-focused lifestyle right at your doorstep. Explore local retail, cafes, bars, and parklands, or head into the city for a dose of urban excitement.



IDEAL FOR

- Queensland University of Technology (Kelvin Grove and Gardens Point) \$10/WK OFF (CODE: QUTCOOL)
- University of Queensland \$10/WK OFF (CODE: UQCOOL)
- Australian Catholic University (ACU) \$10/WK OFF (CODE: ACUCOOL)



ROOM TYPES AVAILABLE

- 2, 3 and 5 Bedroom Share Apartments (with shared bathrooms)
- 1 Bedroom Apartments (with private bathroom)
- Accessible apartments available

📍 62 Blamey Street, Kelvin Grove QLD 4059

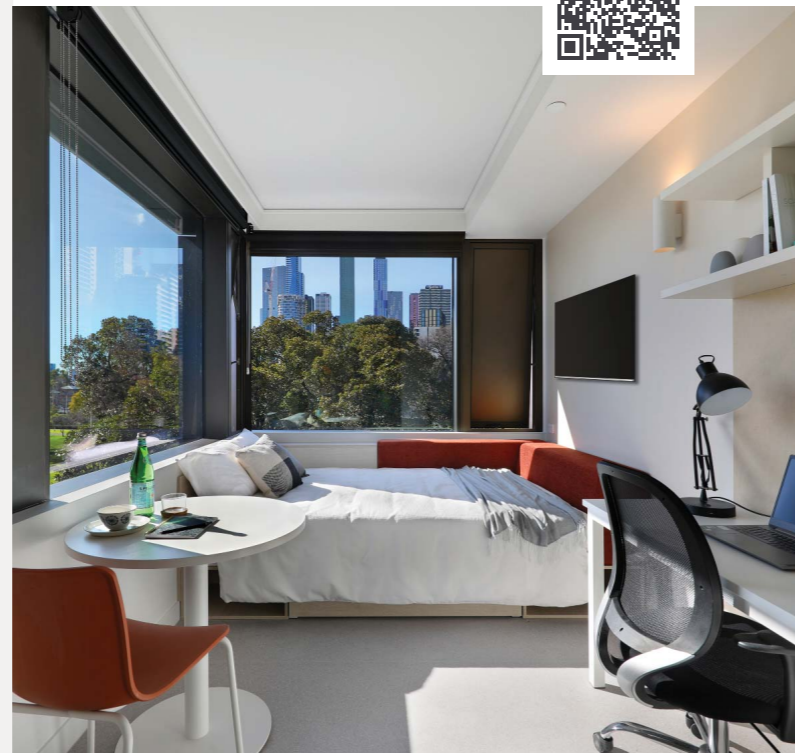
☎ +61 7 3839 3733 or kelvingrove@iglu.com.au



Iglu Flagstaff Gardens

City living with garden views

Next to sunny Flagstaff Gardens, this area offers convenient access to Melbourne's universities via various public transport options. Flagstaff train station is a 5-minute walk, connecting you to all parts of the city. A stroll through the gardens leads you to the vibrant Queen Victoria Market, a beloved Melbourne landmark. Head down La Trobe Street, and you'll find yourself amidst Melbourne's iconic laneways and bustling CBD shopping district.



IDEAL FOR

- University of Melbourne **\$10/WK OFF (CODE: UOMCOOL)**
- RMIT **\$10/WK OFF (CODE: RMITCOOL)**
- Australian Catholic University (ACU) **\$10/WK OFF (CODE: ACUCOOL)**
- Monash University & College **\$10/WK OFF (CODE: MONASH)**



ROOM TYPES AVAILABLE

- Standard and Premium 2 Bedroom Share Apartments
- Single, Standard, Premium and Premium Corner Studio Apartments (all with private bathrooms)
- Accessible apartments available

7 Batman Street, West Melbourne VIC 3003

+61 3 9000 8795 or flagstaffgardens@iglu.com.au

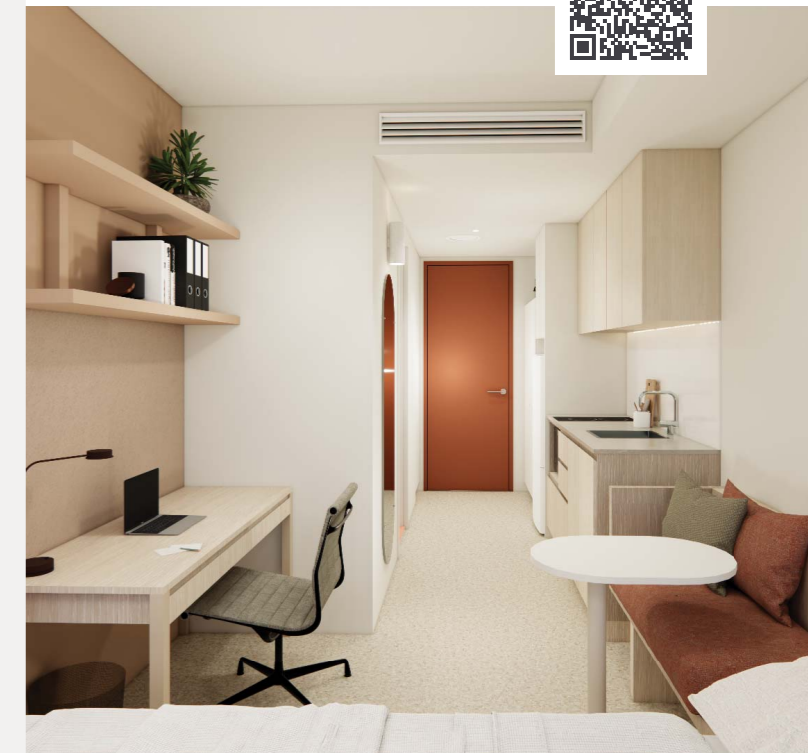


Iglu Flagstaff Station

The best of both worlds

Not only is Iglu Flagstaff Station close to the train and tram, making getting to campuses like RMIT and the University of Melbourne easy, it's also close to many of the amazing places Melbourne is known for. Queen Victoria Market and Melbourne's iconic laneways are a short stroll. The shopping mecca centred around La Trobe, Elizabeth, Swanston and Collins Streets is a 10 minute walk. When you want to head further afield, there will be a train, tram or bus coming along in a few minutes to take you there.

OPENS
MID
2026



IDEAL FOR

- University of Melbourne **\$10/WK OFF (CODE: UOMCOOL)**
- RMIT **\$10/WK OFF (CODE: RMITCOOL)**
- Monash University & College **\$10/WK OFF (CODE: MONASH)**
- Australian Catholic University (ACU)



ROOM TYPES AVAILABLE

- 2 Bedroom, 1 Bathroom Share Apartments
- Standard, Premium and Premium Corner Studio Apartments (all with private bathrooms)
- Accessible apartments available

360 William Street, Melbourne VIC 3000

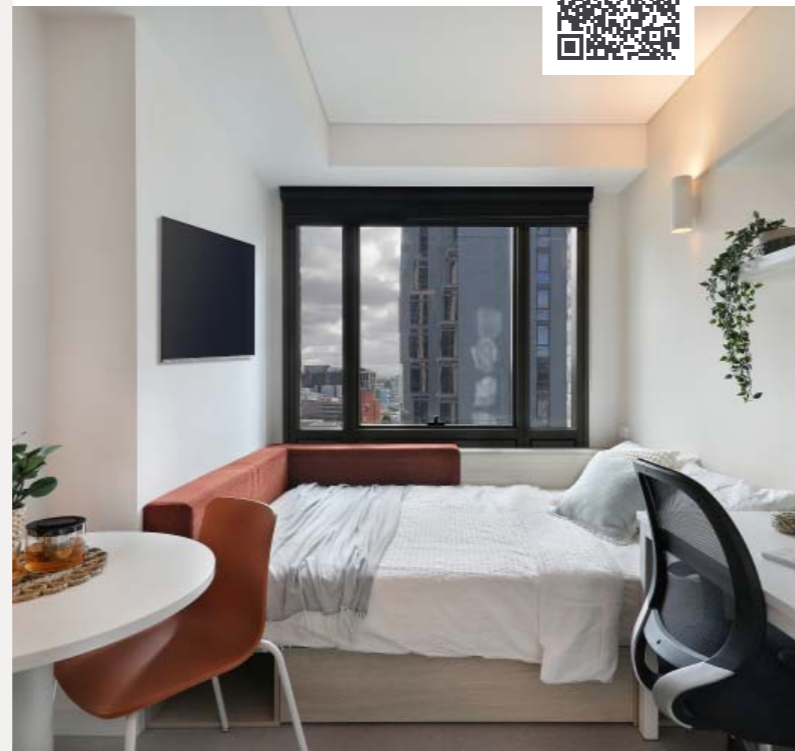
+61 3 9002 5620 or flagstaffstation@iglu.com.au



Iglu Melbourne Central

As close as it gets

Located behind Victoria's iconic State Library, at the corner of Little Lonsdale and Russell Streets, Iglu Melbourne Central offers unbeatable convenience. RMIT is just around the corner, and the University of Melbourne and all Monash CBD campuses are easily accessible. With a variety of smartly designed studio apartments and Iglu's signature shared spaces, including a rooftop terrace and gym, student living here is exceptionally convenient.



IDEAL FOR

- RMIT **\$10/WK OFF (CODE: RMITCOOL)**
- University of Melbourne
- Monash University & College **\$10/WK OFF (CODE: MONASH)**
- Australian Catholic University (ACU) **\$10/WK OFF (CODE: ACUCOOL)**



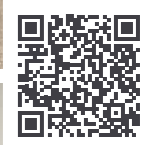
ROOM TYPES AVAILABLE

- Standard and Premium Studio Apartments
- All rooms have a own private bathroom*

Accessible apartments available

167 Little Lonsdale Street, Melbourne VIC 3000

+61 3 9000 8114 or melbournecentral@iglu.com.au



Iglu Melbourne City

Cool student living on the market

Roll out of bed into class, drop into the nearby shops or head out for the night, everything is on your doorstep at Iglu Melbourne City. Discover the city sights with the comprehensive tram network, immerse yourself in the arts and culture scene, grab a cool fix at Queen Victoria Market, or simply escape the buzz and enjoy the nearby parklands around the area. Student living has never been so cool.



IDEAL FOR

- RMIT **\$10/WK OFF (CODE: RMITCOOL)**
- University of Melbourne
- Aus Catholic University (ACU) **\$20/WK OFF 6 BED (CODE: ACUCOOL)**
- Monash University & College **\$10/WK OFF (CODE: MONASH)**



ROOM TYPES AVAILABLE

- 5 and 6 Bedroom Share Apartments
- Standard and Premium Studio Apartments
- All rooms have a private bathroom*

Accessible apartments available

229 Franklin Street, Melbourne VIC 3000

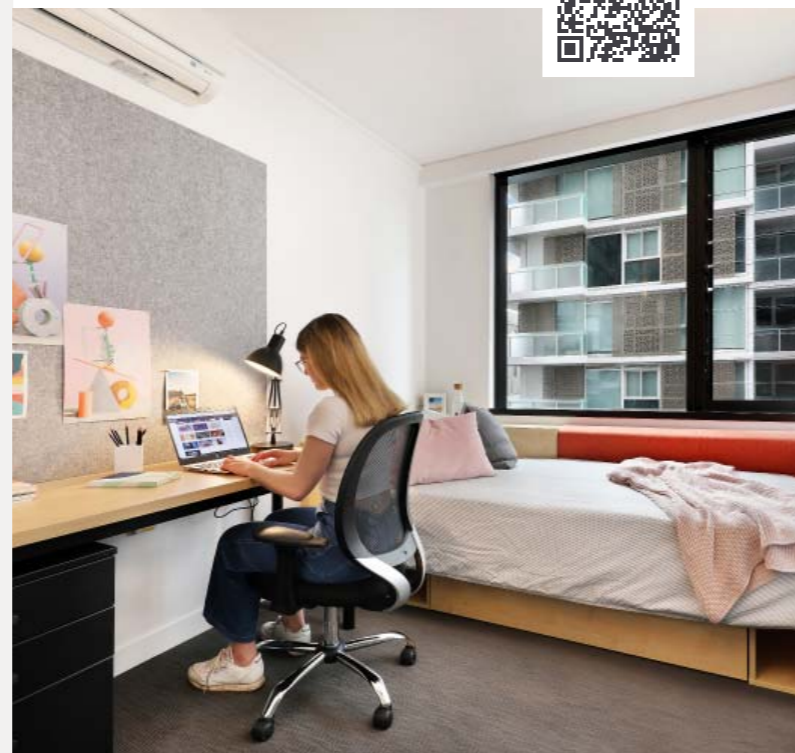
+61 3 9002 5600 or melbournecity@iglu.com



Iglu South Yarra

Set up home in a Melbourne hotspot

Iglu South Yarra exemplifies prime location by design, with trains just a 2-minute walk away. Its exceptional in-house facilities and finishes cater to the needs of discerning students. Situated in one of Melbourne's trendiest precincts, you'll find cool bars, cafes, urban shops, and foodie delights on every corner. The Melbourne CBD and Monash University's Caulfield Campus are just 8 minutes away, offering convenience living at its finest.



IDEAL FOR

- Monash University & College **\$10/WK OFF (CODE: MONASH)**
- University of Melbourne
- RMIT **\$10/WK OFF (CODE: RMITCOOL)**
- Australian Catholic University (ACU)

ROOM TYPES AVAILABLE

- 5 and 6 Bedroom Standard and Premium Share Apartments
- Single, Standard and Premium Studio Apartments
- *All rooms have a private bathroom*
- Accessible apartments available

📍 8 Claremont Street, South Yarra VIC 3141
 📞 +61 3 9002 5610 or southyarra@iglu.com.au



Iglu Broadway

Laneway living in a student hotspot

Situated opposite UTS and a stone's throw from the University of Sydney and Notre Dame, there is no getting any closer to campus. At the heart of the iconic Central Park Precinct, on Kensington Street, one of Sydney's funkiest laneways, Iglu Broadway offers awesome access to dining, shopping and nightlife as well as multiple transport options to get around the city.



IDEAL FOR

- University of Sydney
- University of Technology Sydney (UTS)
- All Sydney CBD college campuses
- University of New South Wales (UNSW)

ROOM TYPES AVAILABLE

- 4, 5 and 6 Bedroom Share Apartments
- Standard, Superior and Premium Studio Apartments
- *All rooms have a private bathroom*
- Accessible apartments available

📍 9 Kensington Street, Chippendale NSW 2008
 📞 +61 2 8024 8640 or broadway@iglu.com.au



Iglu Central Park

Step straight into Sydney student life

Experience the beating heart of the city at Iglu Central Park and let the innovative architectural design inspire and stimulate your learning experience as you discover all the city has on offer. Chippendale has long been a fave student neighbourhood and the Central Park precinct gives it the ultimate hip factor. With excellent proximity to campuses, cafes, retail and nightlife, this is one cool student hangout.



IDEAL FOR

- University of Sydney
- University of Technology Sydney (UTS)
- All Sydney CBD college campuses
- University of New South Wales (UNSW)



ROOM TYPES AVAILABLE

- 3, 4, and 6 Bedroom Share Apartments
- Standard, Superior and Premium Studio Apartments
- *All rooms have a private bathroom*
- Accessible apartments available

📍 6 Central Park Avenue, Chippendale NSW 2008

☎ +61 2 8024 8650 or centralpark@iglu.com.au



Iglu Chatswood

Vibrant hub and student lifestyle

Located in Chatswood, a vibrant and diverse hub on Sydney's North Shore, Iglu Chatswood ticks so many boxes. Situated steps away from the station, not only will you have an immediate self-contained community but Macquarie University is 10 minutes by train and the CBD is 20 minutes. With shops, restaurants and entertainment all close by, your needs are fully catered for right outside your door.



IDEAL FOR

- Macquarie University \$20/WK OFF (CODE: MQCOOL)
- Australian Catholic University (ACU) North Sydney
- All Sydney CBD college campuses
- University of Technology Sydney (UTS)



ROOM TYPES AVAILABLE

- 4, 5 and 6 Bedroom Share Apartments
- Standard, Superior and Premium Studio Apartments
- *All rooms have a private bathroom*
- Accessible apartments available

📍 73 Albert Avenue, Chatswood NSW 2067

☎ +61 2 8024 8610 or chatswood@iglu.com.au



Iglu Mascot

Location meets connection

Situated just 200 metres from Mascot Station in Sydney, Iglu Mascot provides residents with hassle-free connectivity to the city's major universities and colleges during the day, while offering a plethora of dining options at night. The accommodation comprises a combination of shared and studio apartments, complemented by Iglu's trademark amenities like study areas, a gym, weekday cool start breakfast, and multiple levels of outdoor space.

Iglu Mascot is expanding with a cool new phase landing in early 2027. Watch this space for more.

8 John Street, Mascot NSW 2020
+61 2 9000 3469 or mascot@iglu.com.au

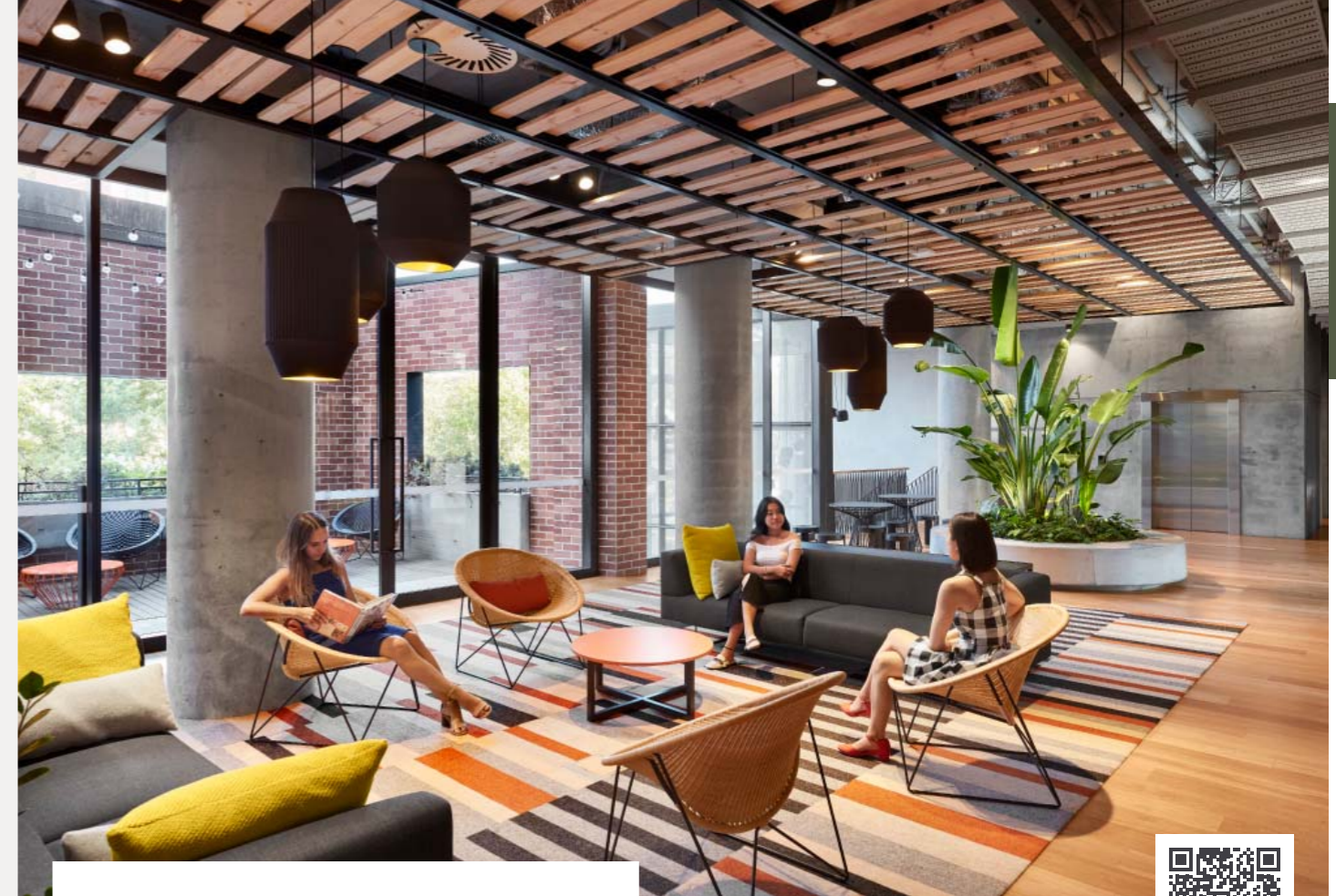


IDEAL FOR

- University of New South Wales (UNSW)
- University of Technology Sydney (UTS)
- University of Sydney
- All Sydney CBD college campuses

ROOM TYPES AVAILABLE

- Standard and Premium 6 Bedroom Share Apartments
- Standard and Premium Studio Apartments
- All rooms have a private bathroom
- Accessible apartments available



Iglu Redfern

Creative community with local vibes

Redfern seamlessly merges Australian traditions with a trendy modern flair, creating a vibrant and varied community within walking distance of major Sydney universities and colleges. With a range of apartment options, awesome communal facilities and great public transport connectivity, Iglu Redfern is the ideal hub for students who prefer to stay in sync with the heartbeat of the city.

66 Regent Street, Redfern NSW 2016
+61 2 8024 8630 or redfern@iglu.com.au

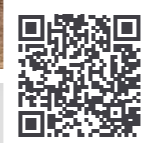


IDEAL FOR

- University of Sydney
- University of New South Wales (UNSW)
- University of Technology Sydney (UTS)
- All Sydney CBD college campuses

ROOM TYPES AVAILABLE

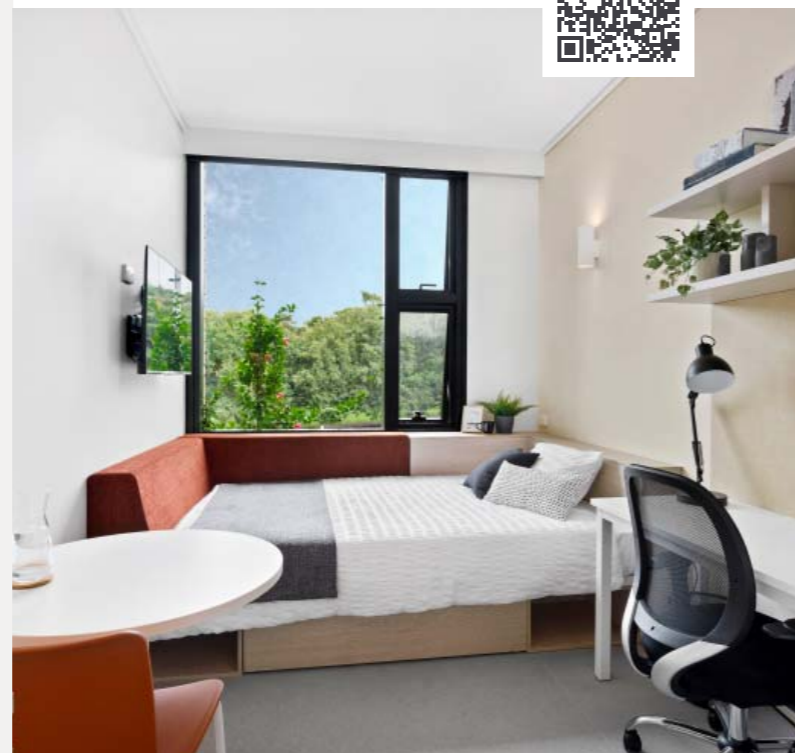
- 4, 5 and 6 Bedroom Share Apartments
- Single, Standard and Premium Studio Apartments
- All rooms have a private bathroom
- Accessible apartments available



Iglu Summer Hill

Village vibes in the funky Inner West

Nestled in one of Sydney's chic Inner West suburbs, Iglu Summer Hill is a cool alternative for students. The building boasts fully furnished private studios and an array of shared facilities, such as study rooms, a gym, a coffee and breakfast bar, and a spacious courtyard. With its convenient proximity to the CBD and vibrant local scene, Summer Hill offers an attractive and modern lifestyle for discerning students.



IDEAL FOR

- Australian Catholic University (ACU) Strathfield
- University of Sydney
- University of Technology (UTS) Sydney
- All Sydney CBD college campuses



ROOM TYPES AVAILABLE

- Standard and Premium Studio Apartments
- All rooms have a private bathroom



Accessible apartments available

74 Carlton Crescent, Summer Hill NSW 2130

+61 2 8000 3580 or summerhill@iglu.com.au



Iglu Waterloo

Convenient and connected

Perfectly positioned, adjoining a metro station, getting to any Sydney campus will be a breeze from Iglu Waterloo. With a mix of two bedroom share apartments and private studios, students will be able to choose their own living experience while enjoying Iglu's signature communal facilities including a gym, study areas and outdoor terrace. Iglu Waterloo is set to become Sydney's next go-to student address.



IDEAL FOR

- University of Sydney (and Taylors College)
- University of New South Wales (UNSW)
- University of Technology Sydney (UTS)
- All Sydney CBD college campuses



ROOM TYPES AVAILABLE

- 2 Bedroom, 1 Bathroom Share Apartments
- Standard, Superior and Premium Studio Apartments



Accessible apartments available

111 Botany Road, Waterloo NSW 2017

+61 2 8000 3585 or waterloo@iglu.com.au

BRISBANE

IGLU BRISBANE CITY

65 Mary Street
Brisbane, QLD 4000
+61 7 3085 3434
brisbanecity@iglu.com.au

IGLU KELVIN GROVE

62 Blamey Street
Kelvin Grove QLD 4059
+61 7 3839 3733
kelvingrove@iglu.com.au

MELBOURNE

IGLU FLAGSTAFF GARDENS

7 Batman Street
West Melbourne VIC 3003
+61 3 9000 8795
flagstaffgardens@iglu.com.au

IGLU FLAGSTAFF STATION

360 William Street
Melbourne VIC 3000
+61 3 9002 5620
flagstaffstation@iglu.com.au

IGLU MELBOURNE CENTRAL

167 Little Lonsdale Street
Melbourne VIC 3000
+61 3 9000 8114
melbournecentral@iglu.com.au

IGLU MELBOURNE CITY

229 Franklin Street
Melbourne VIC 3000
+61 3 9002 5600
melbournecity@iglu.com.au

IGLU SOUTH YARRA

8 Claremont Street
South Yarra VIC 3141
+61 3 9002 5610
southyarra@iglu.com.au

SYDNEY

IGLU BROADWAY

9 Kensington Street
Chippendale NSW 2008
+61 2 8024 8640
broadway@iglu.com.au

IGLU CENTRAL PARK

6 Central Park Avenue
Chippendale NSW 2008
+61 2 8024 8650
centralpark@iglu.com.au

IGLU CHATSWOOD

73 Albert Avenue
Chatswood NSW 2067
+61 2 8024 8610
chatswood@iglu.com.au

IGLU MASCOT

8 John Street
Mascot NSW 2020
+61 2 9000 3469
mascot@iglu.com.au

IGLU REDFERN

66 Regent Street
Redfern NSW 2016
+61 2 8024 8630
redfern@iglu.com.au

IGLU SUMMER HILL

74 Carlton Crescent
Summer Hill NSW 2130
+61 2 8000 3580
summerhill@iglu.com.au

IGLU WATERLOO

111 Botany Road
Waterloo NSW 2017
+61 2 8000 3585
waterloo@iglu.com.au

Iglu Brisbane City, Brisbane ›



#livecoolatiglu | www.iglu.com.au