



IGLU MELBOURNE CITY » STUDIO APARTMENTS



SLEEPS 1-2



PRIVATE BATHROOM



FREE UNLIMITED WI-FI



AIR CONDITIONING



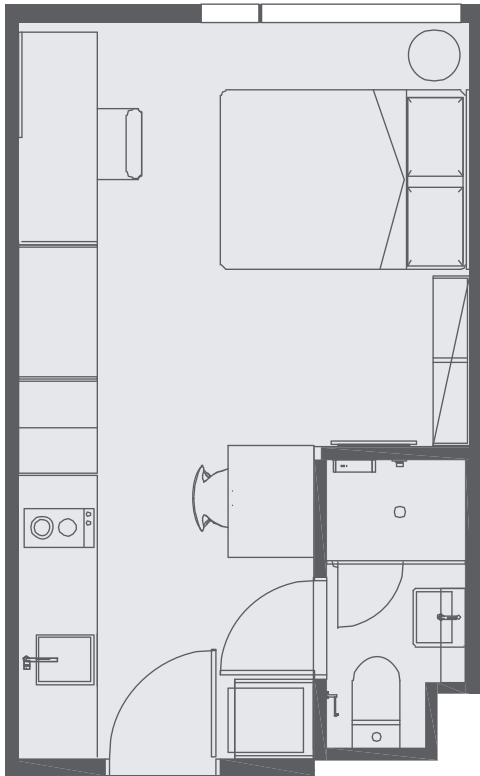
Premium Studio

Live in the heart of Melbourne in a cool studio apartment, with private living and study space, and friends next door.

Sound cool?

- Each studio has a private en-suite bathroom and reverse cycle air conditioning (cooling and heating)
- Features well-appointed kitchenette with eating area for self-catering
- Free unlimited high-speed wi-fi is included and available throughout

Sample floor plans



FLOOR PLAN A › STANDARD OR PREMIUM STUDIOS



FLOOR PLAN B › STANDARD STUDIOS ONLY

Standard and Premium studios are available.

Premium Studios are north facing apartments on levels 1-9 (North Tower) and level 11 upwards (South Tower). They offer district views over the Queen Victoria Market.

Each studio apartment is equipped with:

- › Secure swipe card access
- › Access to high-speed wi-fi
- › Wall-mounted Smart TV
- › Under-bed storage
- › Private en-suite bathroom
- › Air-conditioning and heating
- › Study desk, chair and lamp
- › Pinboard and bookshelf
- › Built-in wardrobe and full length mirror
- › Kitchenette with microwave/convection oven, 2-burner stovetop, refrigerator
- › Kettle, toaster, vacuum cleaner

EN-SUITE BATHROOM

- › Shower
- › Toilet
- › Basin
- › Mirror
- › Shelving
- › Towel rail
- › Exhaust fan
- › Storage cabinet

All images are illustrative only. They are indicative of Iglu's finishes and features.



ONE HANDY ALL-INCLUSIVE FEE

Your weekly rent includes all of this plus your water, electricity, gas, access to 24/7 onsite support and lots of cool events.



Iglu Melbourne City. 229 Franklin Street, Melbourne VIC 3000

+61 3 9002 5600 melbournecity@iglu.com.au

#livecoolatiglu | iglu.com.au/melbournecity