



DISCOVER IGLU  
COOL STUDENT LIVING





Iglu Mascot



Iglu Melbourne Central

## Cool Design

Design sets the scene at Iglu. Whether it be the locations we select, our award winning\* architecture, the beautifully scaled and detailed communal spaces or the smart, neatly planned private accommodation rooms, we are committed to delivering the absolute best location by design.

\* Australian Institute of Architects – New South Wales Awards: Iglu Redfern (2019) and Iglu Summer Hill (2023)

## Warm Hospitality

Cool design is nothing without people to bring it to life and Iglu is really about people. We support our residents to develop and grow as individuals while living in a positive and welcoming environment. The lifestyle, safety and wellbeing of our residents is core to everything we do.

Cover image: Iglu Melbourne Central

# Purpose-built for cool student living, Iglu provides the supportive framework of student accommodation alongside the independence of an off-campus lifestyle.

A combination of cool designer living spaces and first-class facilities presents students with endless opportunities to connect and grow within a safe and secure environment.

*In a nutshell, Iglu offers support when you need it and independence when you want it.*

Discover Iglu today and live your best student life.

“ It feels like home. The thing I like the most about Iglu is that I feel very safe here. ”

*Qinlin*  
IGLU CHATSWOOD



# Iglu is built for students

At Iglu, we don't just build buildings, we build communities. We are a home away from home for our residents during one of the most formative stages of their lives.

Student living is about more than lectures and tutorials, and education doesn't just happen inside a classroom. We appreciate that a balanced approach is key to succeeding in all aspects of life.

When you move into Iglu, you get more than just a place to live. As well as providing an extensive calendar of events and activities across the year, our Iglu team will ensure you enjoy the full student experience. We understand the need for space to come together as well as to be apart. Iglu is about creating connections and providing continued support – whenever that is required.

Our residents thrive on exposure to different cultures, beliefs and backgrounds and our community program is designed to be harmonious and inclusive for all. We achieve this through our:



Iglu Flagstaff Gardens



## SUPPORT

Ensuring you feel safe and secure is our priority. Each Iglu property has CCTV and secure swipe card access to the building, lifts and apartments. Combine this with 24/7 onsite support and you can always be assured that your personal safety is paramount while you live at Iglu.



## LOCATIONS

We want life to be convenient at Iglu. Whether it's getting to campus on time, heading to the shops, catching a movie, having a coffee with a friend, or getting out to explore the city, we choose our locations to facilitate and maximise your student experience, and get you right to where you need to be.



## COMMUNITY

Enjoy the benefits of a campus community right outside your door. When it's time to close the text books, regular events offer endless opportunities to get involved and meet fellow residents. You can dip in and out as desired, knowing that there's always something to do and someone to hang out with.



## FLEXIBILITY

Flexible living is our thing. Take advantage of the separate social and study spaces. Choose a private bedroom in a multi-share apartment or opt for your own studio or one-bedroom apartment. Use the cool amenities available and cook with friends, or head out for a bite. There is no pressure, the choice is yours.



With all of these things included under one roof, it's easy to manage your budget when you live at Iglu:



UNLIMITED WI-FI



WATER, ELECTRICITY, GAS



USE OF COMMUNAL SPACES



24/7 ONSITE SUPPORT



RESIDENT COMMUNITY EVENTS\*



COOL START BREAKFAST#

YOU'RE COVERED AT IGLU

LOTS OF COOL FACILITIES

Plus you get to use all of the communal facilities.



GENEROUS STUDY SPACES



GYM AND EXERCISE AREA



TERRACE AND BBQS



SOCIAL SHARED SPACES



ONSITE LAUNDRY FACILITIES^



BIKE STORAGE AREA

\* Some external events may incur a cost | # Weekdays only | ^ Additional costs apply

A share apartment with your own secure bedroom is a great social option.

WHAT'S INCLUDED?\*

BEDROOM

- › King single or double bed
- › Private or shared bathroom
- › Air-conditioning (or ceiling fans)
- › Desk, chair, lamp and storage
- › Wardrobe and mirror

APARTMENT

- › Television
- › Air-conditioning (or ceiling fans)
- › Sofa, dining table and chairs
- › Kitchen with microwave and/or oven, refrigerator and small appliances (kettle and toaster)

SHOWN: Share apartment at Iglu Melbourne City  
\* Inclusions list is indicative only. Please refer to each property page on [iglu.com.au](http://iglu.com.au) for exact inclusions.

SHARE WITH OTHERS

YOUR OWN STUDIO

If you prefer your own space, a studio apartment# with private bathroom could be the perfect option for you.

WHAT'S INCLUDED?\*

- › Television
- › King single, double or queen bed
- › Tables and chairs
- › Private bathroom
- › Air-conditioning (or ceiling fans)
- › Study desk, chair and lamp
- › Pinboard and bookshelf
- › Wardrobe and mirror
- › Kitchenette with microwave and/or oven, refrigerator and small appliances (kettle and toaster)\*

SHOWN: Standard studio apartment at Iglu Redfern  
\* Inclusions list is indicative only. Please refer to each property page on [iglu.com.au](http://iglu.com.au) for exact inclusions.  
# Iglu Kelvin Grove has one bedroom apartments.







## Aim high, live cool

with the Iglu Regional Scholarship

### Support when you need it, independence when you want it.

If you're a student from Regional Australia or NZ, you could be eligible for **significant rental assistance** during your first year at Iglu.

Choosing the right place to live while you studying is just as important as choosing the right university. At Iglu, we want everyone to have the opportunity to experience the best student living possible. Our rental assistance scholarship is designed to facilitate this, supporting regional students starting their undergraduate degree in Sydney, Melbourne or Brisbane.

Scholarship rooms are available at all Iglu properties. You can learn more on the following pages and visit our website for the details.



*Want to learn more?*

Visit the scholarships section on our website ([www.iglu.com.au/scholarships](http://www.iglu.com.au/scholarships)).



# Location by design

Awesome buildings need awesome locations. We've got that covered.

Great student accommodation needs to go hand-in-hand with a great student lifestyle and our well-situated properties offer excellent access to major universities, essential amenities and public transport along with these unique benefits:

**A diverse social network** – living with fellow students from various universities and colleges, as well as from different corners of the world, opens doors to new friendships outside your usual academic and social circles.

**An immersive experience** – with so many like-minded people around you who are eager to explore their new city, you're more likely to get out and experience all the city has to offer. Many of our events are tailored to help you do just that.

**A change of scene** – many students prefer to keep their study and living environments separate. Our prime locations allow you to leave campus each day and return to a world with a fresh perspective, keeping life interesting and invigorating.





CHECK IT OUT



CHECK IT OUT



## IGLU BRISBANE CITY

### City living for a cool student lifestyle

If you are seeking centrally located, purpose-built accommodation with a unique funky design, Iglu Brisbane City is the answer. Enjoy living at the heart of this exciting city, and know you are within walking distance of Queensland University of Technology's city campus and have easy access to the University of Queensland and local CBD colleges. Factor in shopping, entertainment and nightlife just outside the door, and this is convenience living at its finest.



#### IDEAL FOR

- » Queensland University of Technology (Gardens Point and Kelvin Grove) \$10/WK OFF CODE **QUTCOOL**
- » University of Queensland (St Lucia) \$10/WK OFF CODE **UQCOOL**
- » Australian Catholic University (ACU) \$10/WK OFF CODE **ACUCOOL**

#### ROOM TYPES AVAILABLE

- » 6 Bedroom Share Apartments (shared bathrooms)
- » 5 and 6 Bedroom Share Apartments (private bathroom)
- » Studio Apartments (all with private bathroom)

Accessible apartments

65 Mary Street, Brisbane QLD 4000

+61 7 3085 3434 or brisbanecity@iglu.com.au



## IGLU KELVIN GROVE

### Campus benefits minutes from the city

Located in the heart of the vibrant Kelvin Grove Urban Village just 3km from the Brisbane CBD, Iglu Kelvin Grove is the perfect choice for those studying at Queensland University of Technology's (QUT) Kelvin Grove campus. Get from your bed to your lecture in a matter of minutes, and enjoy a built-in student-lifestyle right on the doorstep. Take advantage of the local retail, cafes, bars and parklands or pop into the city for your fix of buzz.



#### IDEAL FOR

- » Queensland University of Technology (Kelvin Grove and Gardens Point) \$10/WK OFF CODE **QUTCOOL**
- » University of Queensland (Herston) \$10/WK OFF CODE **UQCOOL**
- » Australian Catholic University (ACU) \$10/WK OFF CODE **ACUCOOL**

#### ROOM TYPES AVAILABLE

- » 2, 3 and 5 Bedroom Share Apartments (with shared bathrooms)
- » 1 Bedroom Apartments (with private bathroom)

Accessible apartments

62 Blamey Street, Kelvin Grove QLD 4059

+61 7 3839 3733 or kelvingrove@iglu.com.au

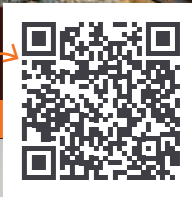




CHECK IT OUT



CHECK IT OUT



# IGLU FLAGSTAFF GARDENS

## City living with garden views

This sunny location, adjacent to its namesake, Flagstaff Gardens, provides easy access to Melbourne's major universities and colleges via all means of public transport. Flagstaff train station is a 5-minute walk and takes you in all directions. Stroll through the gardens and you will come across the buzzing Queen Victoria Market, a Melbourne institution. Wander in the other direction, down La Trobe Street, and you will be in the heart of Melbourne's iconic laneways and pumping CBD shopping precinct.



IDEAL FOR

- » University of Melbourne \$10/WK OFF CODE **UOMCOOL**
- » RMIT \$10/WK OFF CODE **RMITCOOL**
- » Australian Catholic University (ACU) \$10/WK OFF CODE **ACUCOOL**
- » Monash University \$10/WK OFF CODE **MONASH**

ROOM TYPES AVAILABLE

- » Standard and Premium 2 Bedroom Share Apartments
- » Single, Standard and Premium Studio Apartments

Accessible apartments

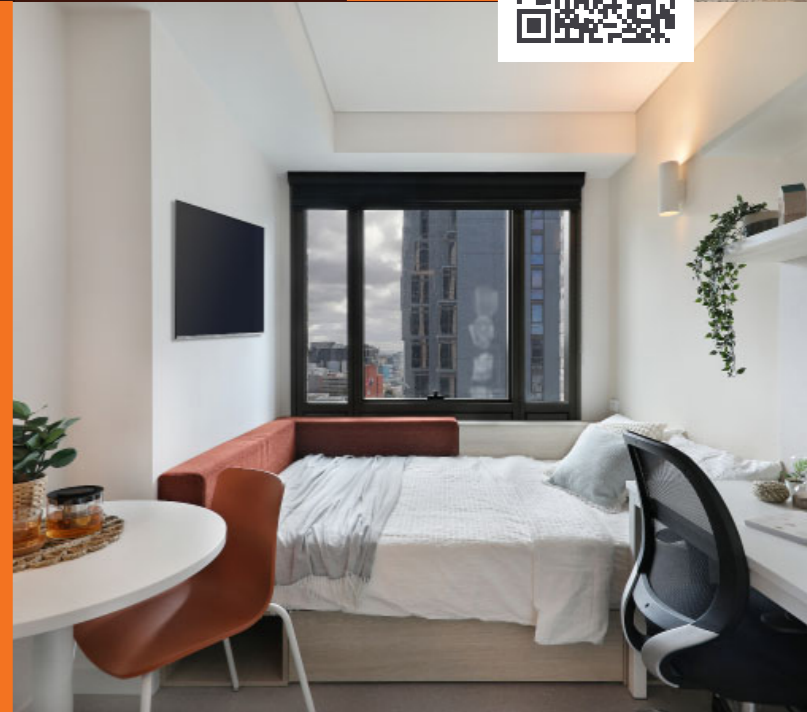
7 Batman Street, West Melbourne VIC 3003  
+61 3 9000 8795 or flagstaffgardens@iglu.com.au



# IGLU MELBOURNE CENTRAL

## As close as it gets

Located behind Victoria's iconic State Library, on the corner of Little Lonsdale and Russell Streets, Iglu Melbourne Central is a short walk to pretty much anywhere. RMIT is literally around the corner, it's a short hop to the University of Melbourne and all Monash CBD campuses. With a range of cleverly designed studio apartments and Iglu's signature cool shared spaces, including a rooftop terrace and gym, student living doesn't get more convenient than this.



IDEAL FOR

- » RMIT \$10/WK OFF CODE **RMITCOOL**
- » University of Melbourne
- » Monash University & Monash College \$10/WK OFF CODE **MONASH**
- » Australian Catholic University (ACU) \$10/WK OFF CODE **ACUCOOL**

ROOM TYPES AVAILABLE

Standard and Premium Studio Apartments  
All rooms have their own private bathroom

Accessible apartments

167 Little Lonsdale Street, Melbourne VIC 3000  
+61 3 9000 8114 or melbournecentral@iglu.com.au

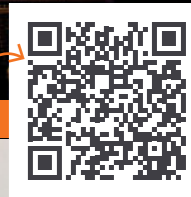




CHECK IT OUT



CHECK IT OUT



## IGLU MELBOURNE CITY

### The coolest student accommodation on the market

Iglu Melbourne City has pride of place at the centre of the Melbourne action. Roll out of bed into class, drop into the nearby shops or head out for the night – it's all available right on your doorstep. Discover the city sights with the amazing and comprehensive tram network, immerse yourself in the arts and culture scene, grab a cool fix at Queen Victoria Market, or simply escape the buzz and enjoy the nearby parklands around the area. Student living has never been so cool.

229 Franklin Street, Melbourne VIC 3000  
+61 3 9002 5600 or melbournecity@iglu.com.au



IDEAL FOR

- » RMIT \$10/WK OFF CODE **RMITCOOL**
- » University of Melbourne
- » Australian Catholic University (ACU) \$20/WK OFF 6 BED CODE **ACUCOOL**
- » Monash University \$10/WK OFF CODE **MONASH**

ROOM TYPES AVAILABLE

- » 5 and 6 Bedroom Share Apartments
- » Standard and Premium Studio Apartments
- All rooms have their own private bathroom*

Accessible apartments



## IGLU SOUTH YARRA

### Convenience living at its best dressed

A perfect example of location by design, with trains just a 2-minute walk away, Iglu South Yarra's exceptional in-house facilities and finishes meet the needs of any well-informed student. It's right in the heart of one of Melbourne's hottest precincts, with cool bars and cafes, urban trend and foodie delights on every corner. The Melbourne CBD and Monash University's Caulfield Campus are just 8 minutes in either direction, making this convenience living at its best dressed.

8 Claremont Street, South Yarra VIC 3141  
+61 3 9002 5610 or southyarra@iglu.com.au



IDEAL FOR

- » Monash University \$10/WK OFF CODE **MONASH**
- » University of Melbourne
- » RMIT \$10/WK OFF CODE **RMITCOOL**
- » Australian Catholic University (ACU)

ROOM TYPES AVAILABLE

- » 5 and 6 Bedroom Standard and Premium Share Apartments
- » Single, Standard and Premium Studio Apartments
- All rooms have their own private bathroom*

Accessible apartments





CHECK IT OUT



CHECK IT OUT



## IGLU BROADWAY

Perfectly positioned in the heart of the city

Situated opposite UTS and a stone's throw from Notre Dame and Sydney Uni there is no getting any closer to campus. At the heart of the iconic Central Park Precinct, on Kensington Street, one of Sydney's funkier laneways, Iglu Broadway offers awesome access to dining, shopping and nightlife as well as multiple transport options to get around the city.

### National Rental Affordability Scheme (NRAS)

Iglu Broadway is supported by NRAS, an Australian Government initiative providing affordable rental options. At Iglu, it means we can reduce rents by at least 20% and pass this cool saving onto eligible students. For details see [www.iglu.com.au/nras-scheme](http://www.iglu.com.au/nras-scheme).

9 Kensington Street, Chippendale NSW 2008

+61 2 8024 8640 or [broadway@iglu.com.au](mailto:broadway@iglu.com.au)



IDEAL FOR

- » University of Sydney
- » University of Technology Sydney (UTS)
- » All Sydney CBD college campuses
- » University of New South Wales (UNSW)

ROOM TYPES AVAILABLE

- » 4, 5 and 6 Bedroom Share Apartments
  - » Standard, Superior and Premium Studio Apartments
- All rooms have their own private bathroom*

Accessible apartments



## IGLU CENTRAL

Boutique location with urban charm

Ideally situated in Sydney's Chippendale district, Iglu Central is a heartbeat away from major institutions such as UTS, Sydney University, and Notre Dame University. Stroll to the CBD or hop on a train to escape the city at nearby Central Station. With shops, restaurants and other entertainment all close by, everything you need is available right on your doorstep.

1 Regent Street, Chippendale, Sydney NSW 2008

+61 2 8024 8600 or [central@iglu.com.au](mailto:central@iglu.com.au)



IDEAL FOR

- » University of Sydney
- » University of Technology Sydney (UTS)
- » All Sydney CBD college campuses
- » University of New South Wales (UNSW)

ROOM TYPES AVAILABLE

- » 6 Bedroom Share Apartments (shared bathrooms)
- » 5 and 6 Bedroom Share Apartments (private bathroom)
- » Studio Apartments (all with private bathroom)

Accessible apartments

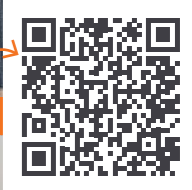




CHECK IT OUT



CHECK IT OUT



## IGLU CENTRAL PARK

### Step into the best of Sydney

Experience the beating heart of the city at Iglu Central Park and let the innovative architectural design inspire and stimulate your learning experience as you discover all the city has on offer. Chippendale has long been a student neighbourhood and the reinvigorated Central Park precinct gives it the ultimate hip factor. With excellent proximity to campuses, cafes, retail and nightlife, this is one cool student hangout.

#### National Rental Affordability Scheme (NRAS)

Iglu Central Park is supported by NRAS, an Australian Government initiative providing affordable rental options. At Iglu, it means we can reduce rents by at least 20% and pass this cool saving onto eligible students. For details see [www.iglu.com.au/nras-scheme](http://www.iglu.com.au/nras-scheme).

6 Central Park Avenue, Chippendale NSW 2008

+61 2 8024 8650 or [centralpark@iglu.com.au](mailto:centralpark@iglu.com.au)



IDEAL FOR

- » University of Sydney
- » University of Technology Sydney (UTS)
- » All Sydney CBD college campuses
- » University of New South Wales (UNSW)

ROOM TYPES AVAILABLE

- » 3, 4, and 6 Bedroom Share Apartments
  - » Standard, Superior and Premium Studio Apartments
- All rooms have their own private bathroom*

Accessible apartments



## IGLU CHATSWOOD

### Vibrant local community and student lifestyle

Located in Chatswood, a vibrant multi-cultural hub on Sydney's North Shore, Iglu Chatswood ticks every Iglu box. Situated steps away from the station, not only will you have an immediate self-contained community but Macquarie Uni is only 10-minutes by train and the CBD a mere 20 minutes. With shops, restaurants, fitness and entertainment all close by, your needs are fully catered for right outside your door.

73 Albert Avenue, Chatswood NSW 2067

+61 2 8024 8610 or [chatswood@iglu.com.au](mailto:chatswood@iglu.com.au)



IDEAL FOR

- » Macquarie University \$10/WK OFF CODE **MQCOOL**
- » Australian Catholic University (ACU) North Sydney
- » All Sydney CBD college campuses
- » University of Technology Sydney (UTS)

ROOM TYPES AVAILABLE

- » 4, 5 and 6 Bedroom Share Apartments
  - » Standard, Superior and Premium Studio Apartments
- All rooms have their own private bathroom*

Accessible apartments





CHECK IT OUT



CHECK IT OUT



## IGLU MASCOT

### The perfect mix of location and connection

Situated just 200 metres from Mascot Station in Sydney, Iglu Mascot provides residents with hassle-free connectivity to the city's major universities and colleges during the day, while offering a plethora of dining options at night. The accommodation comprises a combination of shared and studio apartments, complemented by Iglu's trademark amenities like study areas, a gym, weekday cool start breakfast, and multiple levels of outdoor space.

8 John Street, Mascot NSW 2020  
+61 2 9000 3469 or mascot@iglu.com.au



IDEAL FOR

- » University of New South Wales (UNSW)
- » University of Technology Sydney (UTS)
- » University of Sydney
- » All Sydney CBD college campuses

ROOM TYPES AVAILABLE

- » Standard and Premium 6 Bedroom Share Apartments
  - » Standard and Premium Studio Apartments
- All rooms have their own private bathroom

Accessible apartments



## IGLU REDFERN

### Creative community on the city edge

Redfern seamlessly merges Australian traditions with a trendy modern flair, creating a vibrant and varied community within walking distance of major Sydney universities and colleges. With a range of apartment options, awesome communal facilities and great public transport connectivity, Iglu Redfern is the ideal hub for students who prefer to stay in sync with the heartbeat of the city.

**National Rental Affordability Scheme (NRAS)**  
Iglu Redfern is supported by NRAS, an Australian Government initiative providing affordable rental options. At Iglu, it means we can reduce rents by at least 20% and pass this cool saving onto eligible students. For details see [www.iglu.com.au/nras-scheme](http://www.iglu.com.au/nras-scheme).

66 Regent Street, Redfern NSW 2016  
+61 2 8024 8630 or redfern@iglu.com.au



IDEAL FOR

- » University of Sydney
- » University of New South Wales (UNSW)
- » University of Technology Sydney (UTS)
- » All Sydney CBD college campuses

ROOM TYPES AVAILABLE

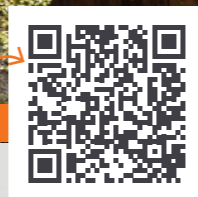
- » 4, 5 and 6 Bedroom Share Apartments
  - » Single, Standard and Premium Studio Apartments
- All rooms have their own private bathroom

Accessible apartments





CHECK IT OUT



Deciding where to live while you study is a big decision and it's important to weigh up all of the options.

We have lots of experience in this field and our Iglu team (which includes some ex-residents who loved it so much they chose to work with us) is here to help you navigate your way along the journey.

To get started, jump onto our website and start discovering why Iglu is the coolest place to live while you study!

GET STARTED



## IGLU SUMMER HILL

### Village vibes in Sydney's cool Inner West

Nestled in one of Sydney's chic Inner West suburbs, Iglu Summer Hill is a cool alternative for students. The building boasts fully furnished private studios and an array of shared facilities, such as study rooms, a gym, a coffee and breakfast bar, and a spacious courtyard. With its convenient proximity to the CBD and vibrant local scene, Summer Hill offers an attractive and modern lifestyle for discerning students.



IDEAL FOR

- » Australian Catholic University (ACU) Strathfield
- » University of Sydney
- » University of Technology (UTS) Sydney
- » All Sydney CBD college campuses

ROOM TYPES AVAILABLE

- » Standard and Premium Studio Apartments  
*All rooms have their own private bathroom*
- » Accessible apartments

74 Carlton Crescent, Summer Hill NSW 2130

+61 2 8000 3580 or [summerhill@iglu.com.au](mailto:summerhill@iglu.com.au)



## YOU DON'T NEED TO WAIT TO BOOK

With our 'No Visa, No Offer, No Pay' option, you can tick finding a place to live off your list without needing to wait for your Visa or course offer. You can cancel your agreement without charge if you are unable to secure an Australian Visa or you don't get accepted to your preferred university. Find out more about our policy at [www.iglu.com.au/cancellation](http://www.iglu.com.au/cancellation).



## BRISBANE

### **IGLU BRISBANE CITY**

65 Mary Street  
Brisbane, QLD 4000  
T: +61 7 3085 3434  
E: brisbanecity@iglu.com.au

### **IGLU KELVIN GROVE**

62 Blamey Street  
Kelvin Grove QLD 4059  
T: +61 7 3839 3733  
E: kelvingrove@iglu.com.au

## MELBOURNE

### **IGLU FLAGSTAFF GARDENS**

7 Batman Street  
West Melbourne VIC 3003  
T: +61 3 9000 8795  
E: flagstaffgardens@iglu.com.au

### **IGLU MELBOURNE CENTRAL**

167 Little Lonsdale Street  
Melbourne VIC 3000  
T: +61 3 9000 8114  
E: melbournecentral@iglu.com.au

### **IGLU MELBOURNE CITY**

229 Franklin Street  
Melbourne VIC 3000  
T: +61 3 9002 5600  
E: melbournecity@iglu.com.au

### **IGLU SOUTH YARRA**

8 Claremont Street  
South Yarra VIC 3141  
T: +61 3 9002 5610  
E: southyarra@iglu.com.au

## SYDNEY

### **IGLU BROADWAY**

9 Kensington Street  
Chippendale NSW 2008  
T: +61 2 8024 8640  
E: broadway@iglu.com.au

### **IGLU CENTRAL**

1 Regent Street  
Chippendale NSW 2008  
T: +61 2 8024 8600  
E: central@iglu.com.au

### **IGLU CENTRAL PARK**

6 Central Park Avenue  
Chippendale NSW 2008  
T: +61 2 8024 8650  
E: centralpark@iglu.com.au

### **IGLU CHATSWOOD**

73 Albert Avenue  
Chatswood NSW 2067  
T: +61 2 8024 8610  
E: chatswood@iglu.com.au

### **IGLU MASCOT**

8 John Street  
Mascot NSW 2020  
T: +61 2 9000 3469  
E: mascot@iglu.com.au

### **IGLU REDFERN**

66 Regent Street  
Redfern NSW 2016  
T: +61 2 8024 8630  
E: redfern@iglu.com.au

### **IGLU SUMMER HILL**

74 Carlton Crescent  
Summer Hill NSW 2130  
T: +61 2 8000 3580  
E: summerhill@iglu.com.au



#livecoolatiglu | [www.iglu.com.au](http://www.iglu.com.au)