



A leafy new outlook
for students in
Melbourne.

This sunny location, adjacent
to its namesake, Flagstaff
Gardens, provides easy
access to Melbourne's major
universities and colleges, the
CBD shopping precinct and the
city's iconic laneways.

With five-star facilities including
gourmet kitchens, a gym and
yoga room, and flexible study
spaces, student living doesn't
get much better when you're in
Australia's cultural capital.

IGLU FLAGSTAFF GARDENS

A leafy new outlook for Melbourne students

Commuting from Iglu Flagstaff Gardens to...



7 Batman Street
West Melbourne VIC 3003

Times are approximate and do
not account for traffic or delays.

**ACU
Melbourne**

**Tram
or Bus**
16 mins

Walk
30 mins

Bike
16 mins

**Kaplan
Melbourne**

Tram or Bus
10 mins

Walk
13 mins

Bike
5 mins

**Monash
Caulfield**

Train
30 mins

**Monash
College**

Train
14 mins

Walk
18 mins

Bike
8 mins

**Monash
Parkville**

Tram
20 mins

Bike
13 mins

RMIT

**Tram
or Train**
11 mins

Walk
14 mins

Bike
7 mins

**Uni of
Melbourne**

Tram
15 mins

Walk
20 mins

Bike
8 mins

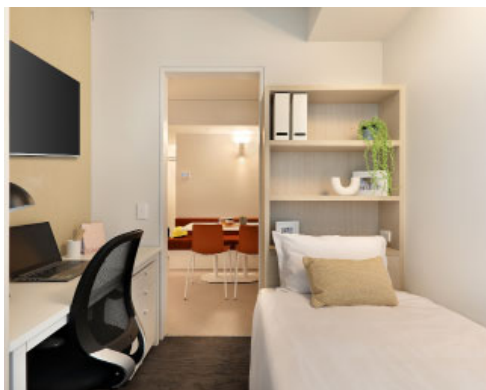
**William
Angliss**

Walk
4 mins

Bike
2 mins

Fully furnished and ready for you to move in

Apartments at Iglu Flagstaff Gardens have everything you need for eating, sleeping and studying will be waiting here for you in your 2-bedroom share apartment or private studio. Just bring your personal belongings and you will be all set to go. When you feel like some company, hitting the gym, or simply need some fresh air, you can choose one of the many communal spaces available to you.



2-Bedroom Apartment

Bedroom (air conditioned with lockable door)

- › Single bed with under-bed storage
- › Wall mounted television with Apple TV
- › Study desk, chair, lamp, pinboard, shelving

Shared space

- › Shared bathroom
- › 2 wardrobes and a full length mirror
- › Kitchen with convection microwave, cooktop, refrigerator, kettle and toaster
- › Dining table and seating nook



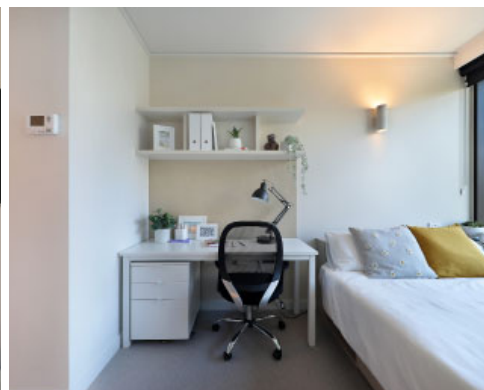
Premium 2-Bedroom Apartment

Bedroom (air conditioned with lockable door)

- › Double bed with built-in storage
- › Study desk, chair, lamp, pinboard, shelving
- › Built-in wardrobe and full length mirror

Shared space

- › Shared bathroom
- › Kitchen with convection microwave, cooktop, refrigerator, kettle and toaster
- › Living space with sofas, dining table
- › Wall mounted television with Apple TV



Private Studio Apartments

- › Double bed with under-bed storage
- › Private en-suite bathroom
- › Wall mounted television with Apple TV
- › Air-conditioning
- › Study desk, chair, lamp, pinboard, shelving
- › Wardrobe and full length mirror
- › Kitchenette with convection microwave, cooktop, refrigerator, kettle and toaster
- › Table, chair, ottoman

You're covered at Iglu

Our weekly inclusions will make budgeting nice and easy

* Some external events may incur a cost
* This is not part of a residential agreement, it is included at Iglu's discretion.



Unlimited wi-fi



24/7 onsite support



Water, electricity, gas



Regular resident events*



Use of communal spaces



Weekday breakfast#



Flexible study spaces



Gourmet kitchens



Gym and exercise area



Onsite laundry facilities



Terrace and BBQs



Bike storage area

Plus you get to use all of the communal facilities.

DISCOVER IGLU AND LIVE YOUR BEST STUDENT LIFE!



Iglu Flagstaff Gardens. 7 Batman Street, West Melbourne VIC 3003
☎ +61 3 9000 8795 ✉ flagstaffgardens@iglu.com.au ⓘ IgluFlagstaffGardens

#livecoolatiglu | iglu.com.au/flagstaffgardens