



IGLU MELBOURNE CITY

STUDIO APARTMENTS



Live in your own fully furnished studio apartment, with private living and study space, and friends right next door.

Sound cool?



SLEEPS 1-2



PRIVATE BATHROOM



WIFI INCLUDED



AIR CONDITIONING



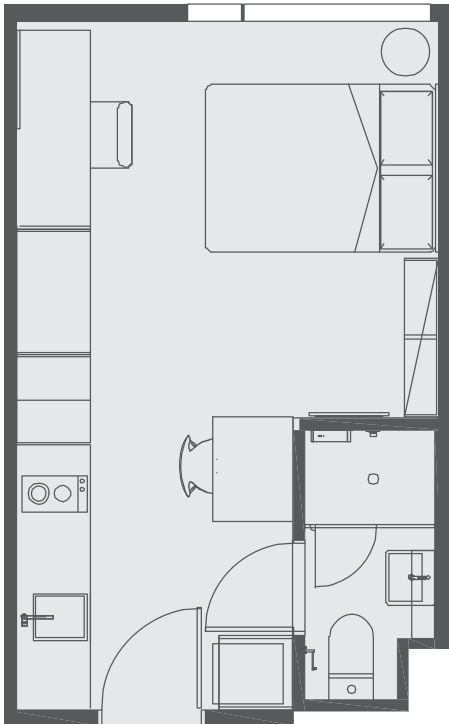
- Each studio has a private en-suite bathroom and reverse cycle air-conditioning
- A well-appointed kitchenette with eating area to allow for self-catering
- Wireless internet is included and is available in all areas of the building



ONE HANDY ALL-INCLUSIVE FEE

Your weekly rent includes all of this plus your water, electricity, gas, access to 24x7 onsite support and lots of cool events.

Sample floor plans



FLOOR PLAN A › STANDARD OR PREMIUM STUDIOS



FLOOR PLAN B › STANDARD STUDIOS ONLY

Standard and Premium studios are available.

Premium Studios offer district views over the Queen Victoria Markets. They are on the street side of the podium and tower (from level 10 upwards).

Each studio apartment is equipped with:

- › Secure swipe card access
- › High speed wireless broadband
- › SMART television
- › Double bed with under-bed storage
- › Private bathroom
- › Air-conditioning and heating
- › Study desk, chair and lamp
- › Pinboard and bookshelf
- › Built-in wardrobe and full length mirror
- › Kitchenette with microwave/convection oven, 2-burner stovetop, refrigerator, kettle, toaster

En-suite bathroom has:

- › Shower
- › Toilet
- › Basin
- › Mirror
- › Shelving
- › Towel rail
- › Exhaust fan
- › Storage cabinet

All images are illustrative only. They are indicative of Iglu's finishes and features.



Iglu Melbourne City. 229 Franklin Street, Melbourne VIC 3004

+61 3 9002 5600 [✉ melbournecity@iglu.com.au](mailto:melbournecity@iglu.com.au)

[#livecoolatiglu](https://www.iglu.com.au/melbournecity) | [iglu.com.au/melbournecity](https://www.iglu.com.au/melbournecity)